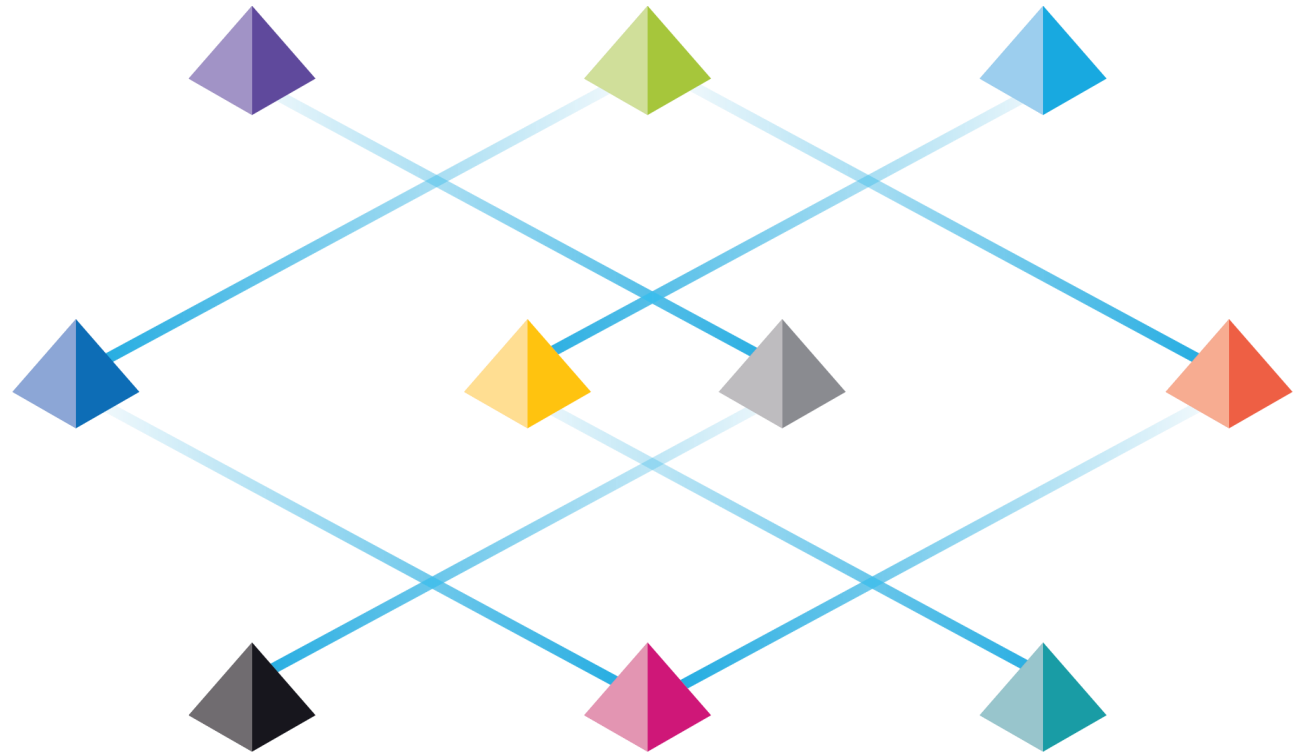


DAY1.S1.
블루프리즘 제품 소개



블루프리즘 제품 소개

Delivery Methodology

- The Severn Foundations of Robotic Operation Model
- Delivery Life Cycle
- Key deliverables

Blue Prism Dev. Tools

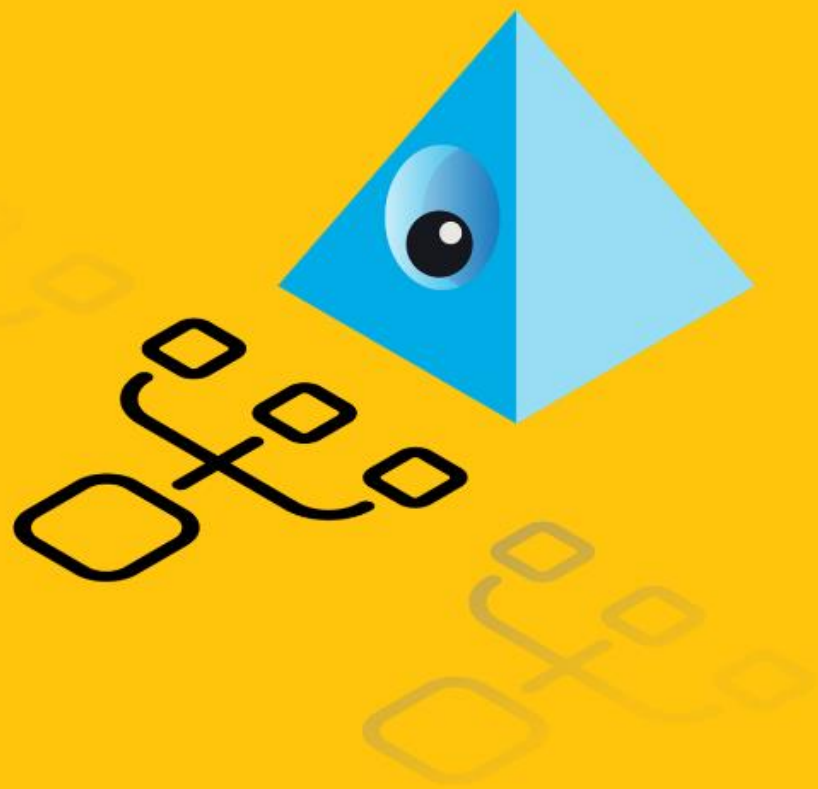
- Development Tools at a glance
- Process Assessment Tool (PAT)
- Blue Prism Process Intelligence (BPPI)
- Capture
- Automation Lifecycle Management (ALM)

Blue Prism flagships

- Hub
- Control Room
- Interact
- BP API
- Decision
- Decipher IDP

Deployment Architecture

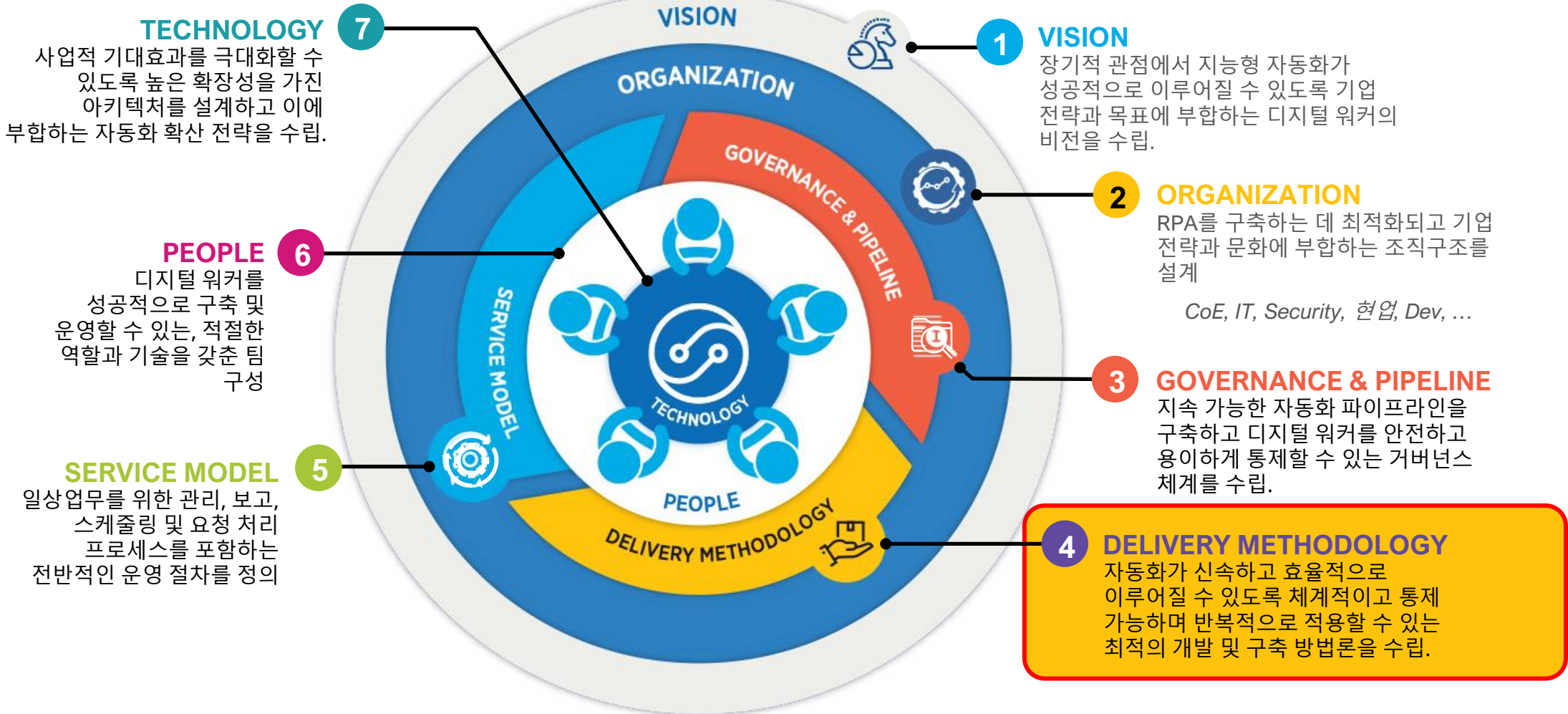
- Deployment architecture
- Deployment examples



1. **Delivery Methodology**
2. Blue Prism Dev Tools
3. Blue Prism flagships
4. Deployment Architecture

The Seven Foundations of Robotic Operating Model

기업내 IT 환경을 고려하여 수작업 업무를 체계적이고 신속하게 자동화하는 동시에 높은 확장성을 가진 RPA를 구축함으로써, 궁극적으로 업무 자동화를 통한 사업적 기대효과를 극대화할 수 있는 Blue Prism RPA 구축 및 운영 방법론을 정의함.



DELIVERY METHDOLOGY

자동화가 신속하고 효율적으로 이루어질 수 있도록 체계적이고 통제 가능하며 반복적으로 적용할 수 있는 최적의 개발 및 구축 방법론을 수립.





Delivery Life Cycle

“ 글로벌 경험에서 쌓인 구축 방법론으로 자동화 업무 개발과 구축을 빠르고 안정적으로 수행 ”





Key Deliverables (1/2) 구축 단계별 산출물



- 현행 업무 프로세스 상세 정의
- 자동화 업무 요구사항 수집 및 분석

- 자동화 업무 설계
- 프로세스 / 오브젝트 설계
- 개발 환경 구축

- 검증된 ready-made 템플릿 활용
- 프로세스/오브젝트 분리 개발
- 엄격한 변경 통제

- 시험 항목/절차 정의 / 고객 승인
- 시험 데이터 준비
- Fix-on-fail

- 운영계 적용 & 모니터링
- 모니터링 및 안정화
- RPA 거버넌스 체계 구축



중점 고려사항

요구사항에 최적화된 자동화 업무 정의

향후 RPA 확장과 오브젝트 재사용성 및 자산화 고려하여 설계

개발 시간을 단축하면서 개발자의 개인역량과 무관하게 일정수준의 RPA 품질을 확보

현업 담당자와 end-to-end 프로세스를 검증하고 예외 처리 보완

RPA 안정화 및 자동화 파이프라인 셋업

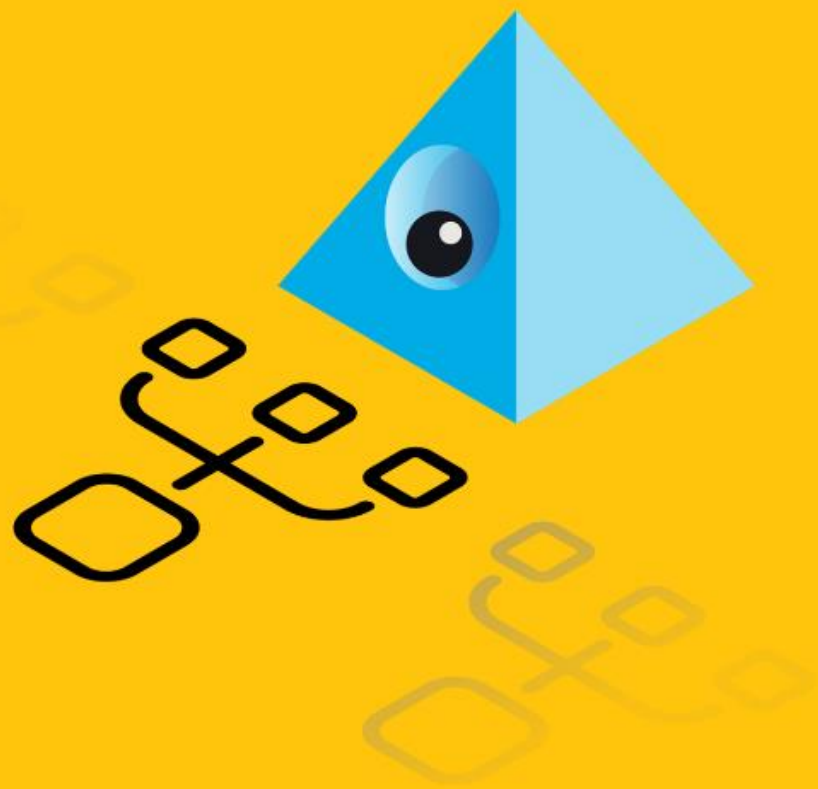
Deliverables	1.1 IPA	2.1 ODI	Process	4.1 Verification Test Plan	5.1 Operational Handbook
	1.2 PDD	2.2 PDI	Object		
	1.3 FRQ	2.3 SDD			5.2 Process Release Acceptance
		2.4 OID			
	2.5 DA				

Tools	<ul style="list-style-type: none"> • Capture 	<ul style="list-style-type: none"> • Design Control Checklist (DCC) • Process Build Tracker (PBT) • Object Build Tracker (OBT) • Business Object Library (BOL) 	<ul style="list-style-type: none"> • Process Build Tracker (PBT) • Object Build Tracker (OBT) • Peer Review Checklist • Build Quality Checklist • Blue Prism Release Analyzer Tool 	<ul style="list-style-type: none"> ▪ 단계별 산출물 작성 및 변경 통제 지원 ▪ 산출물의 일관성과 설계 및 안정적인 개발 품질 확보를 지원 ▪ 현업과 개발자간 정확한 의사소통 체계 지원
-------	---	--	---	--



Key Deliverables (2/2) 구축 단계별 산출물

No	STAGE	DELIVERABLES	DESCRIPTIONS	M/O	Remarks
1.1	Define	Initial Process Analysis (IPA)	자동화 대상 프로세스 상위레벨 기술서로 프로세스별 복잡성, 가정/제약사항, 공수, 형상, 시험 데이터, 기대효과 등 정의	M	
1.2		Process Definition Document (PDD)	자동화 대상 업무 흐름을 keystroke 단위로 상세 기술	M	
1.3		Functional Requirement Questionnaire (FRQ)	자동화 업무 운용 요구사항 e.g., 수행 빈도, 가동 시간, 현업 상호작용, 예외, 알람, 데이터 관리	M	
2.1	Design	Object Design Instruction (ODI)	어플리케이션 별 오브젝트 상세 기술 e.g., 입출력 파라미터, Actions 등	M	
2.2		Process Design Instruction (PDI)	자동화 프로세스 상세 기술 e.g., 프로세스 다이어그램, 관련 오브젝트, 워크 큐, 암호화, 환경/세션 변수 등	M	
2.3		Solution Design Document (SDD)	자동화 솔루션 기술 e.g., End-to-end 프로세스 동작, 운영 형상 (스케줄링, 알람 등)	M	
2.4		Operational Impact Document (OID)	자동화 솔루션 운영 환경 및 관련 부서 협업 체계 정의 e.g, 요구되는 운용자원, IT 자원 요구사항, 데이터 저장소 요구사항, 요소별 담당자 정보, 운영 데이터 보고 체계	M	
2.5		Design Authority (DA)	개발 컴포넌트간 적합성을 보장하기 위해 관련 프로세스 및 오브젝트의 통합 저장소를 유지하고 각 컴포넌트별 변경을 통제 가이드	O	
4.1	Verification Test	Verification Test Plan	UAT 시험 계획서 e.g., 시험 환경, 범위, 합격/실패 기준 등에 관한 제반 사항	O	
5.1	Deployment	Operational Handbook	운영 매뉴얼 e.g., 대상 시스템, 스케줄링, Start-up 파라미터, 워크 큐, 예외처리, 접근정보, Troubleshooting 등	M	
5.2		Process Release Acceptance	단위 프로세스 신규 릴리즈를 상용에 적용하기 위한 승인 문서	M	
6.1	Technical Infrastructure, Security, Governance	Archive and Backup Policy	로그 레벨, 프로세스 및 오브젝트 백업 정책, 로깅 Credential 정보	O	
6.2		Logging Configuration Policy	환경 별 로그레벨 설정 정보, 로깅 정책 및 가이드	O	
6.3		Security Policy and Procedures	보안 정책 및 절차 정의, 각 직무 별 보안 및 권한 설정 정보	M	

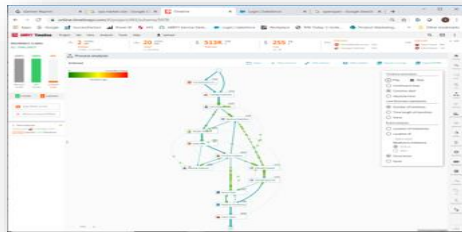


1. Delivery Methodology
2. **Blue Prism Dev Tools**
3. Blue Prism flagships
4. Deployment Architecture

Development Tools at a glance

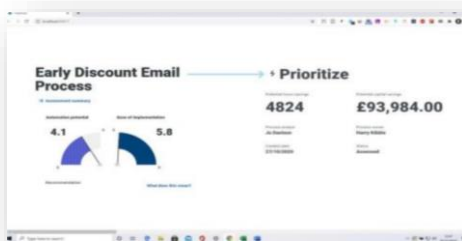
개발 생산성 향상 도구를 이용해 자동화 업무 발굴, 설계 및 개발에 이르는 과정에 소요되는 자원을 최적화함.

DISCOVER



blueprism
Process Intelligence
powered by ABBYY Timeline

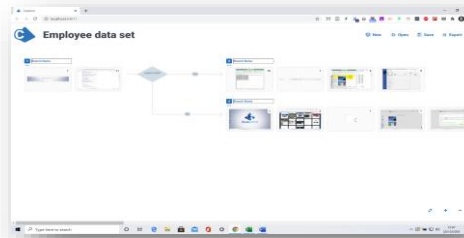
*Data driven mining,
& analysis*



blueprism
Process
Assessment
Tool

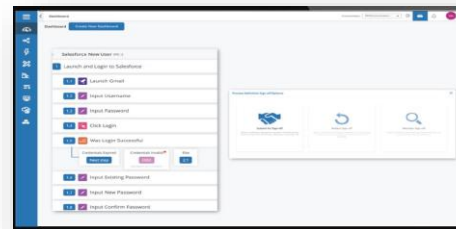
*Crowd sourced,
human
assessment*

DEFINE & OPTIMIZE



blueprism
Capture

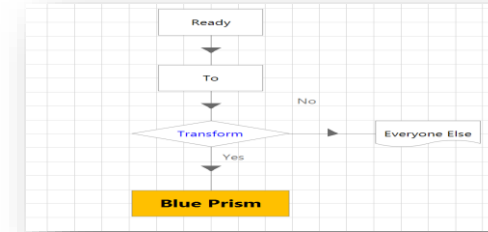
*Generate digital
PDDs*



blueprism
Automation
Lifecycle
Management

*Design toolkit for
automations, promotes
re-usability across the
lifecycle*

DEVELOPMENT



blueprism
Design Studio

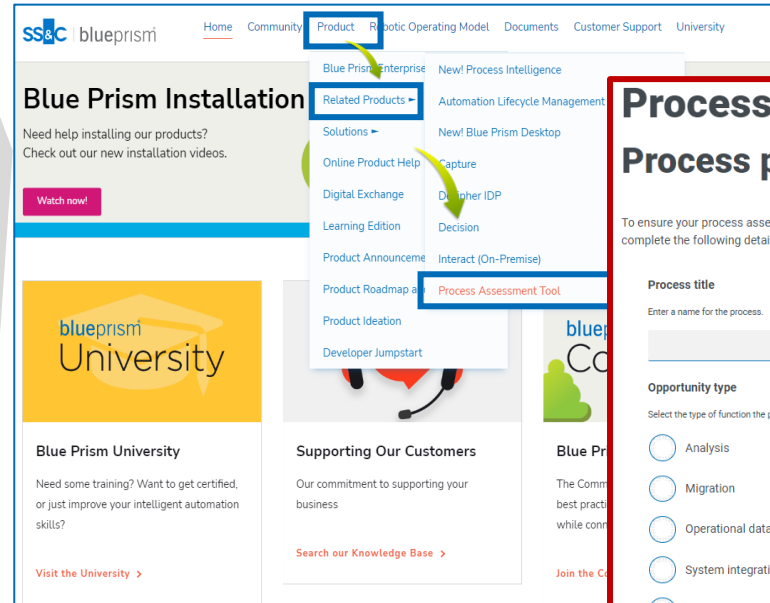
*No-Code Process
design*

Process Assessment Tool (PAT) (1/2)

업무별 자동화 적절성을 평가하는 도구로, 그 결과를 참조하여 자동화할 업무를 최종 선정하는 데 활용.

자동화 적절성 평가 요소 ▼

<h3>Process profile 업무 기본 정보</h3> <ul style="list-style-type: none"> Process title Business function Process owner Process description Tags Etc. 	<h3>Automation Potential 자동화 잠재성</h3> <ul style="list-style-type: none"> Documentation # of people Level of demand # of apps / screens # of steps Structured / un-structured data % of to-be-automated Etc.
<h3>Ease of implementation 구현 용이성</h3> <ul style="list-style-type: none"> % of system w/o direct access to a user I/F # steps covered by existing BP objects Security measures allowed for Digital Worker Test data availability Etc. 	<h3>Benefit 기대효과</h3> <ul style="list-style-type: none"> # of working days per year Time taken to perform task Process frequency Process volume # of working hours per day Average FTE cost Etc.



Portal ▲
Blue Prism 포탈에서 쉽게 접근하여 PAT 작성

PAT ▶
누구나 작성이 용이하도록 설문형태로 작업

Process assessment Process profile

To ensure your process assessments are clearly and consistently labelled, please complete the following details:

Process title
Enter a name for the process.

Opportunity type
Select the type of function the process performs.

- Analysis
- Migration
- Operational data process
- System integration
- Other

Business function
In which part of your business is this process used?

- Customer Care
- Finance
- Human Resources
- Information Technology

작성된 PAT 목록 및 상태를 Dashboard에서 관리
Dashboard ▼

Your processes

0 Prioritize Potential hours returned: 0	1 Review Potential hours returned: 2250	1 Defer Potential hours returned: 1920
Filter	Toggle columns	Change group, Details, Change status, Export
Recommendation	Process title	Assessment group
Defer	Assessment test	My group
Unavailable	TEST2	My group
Review	PAT TEST 001	My group

Assessments per page: 25 | Showing 1-3 of 3 assessments | Previous | Next

Process Assessment Tool (PAT) (2/2)

Process title: PAT TEST 001

Assessment summary

- Automation potential: 4.7
- Ease of implementation: 2.5

Review

- Potential hours savings: **2250**
- Potential capital savings: **US\$112,500.00**

Automation potential summary

- Is each step of the process already well defined and fully documented? Yes
- How frequently are the same steps in the process repeated? Mostly
- Number of people: 2 people are assigned to execute this process daily
- Is this process likely to experience periods of exceptionally high demand? Sometimes
- Number of applications: 2 target systems (or applications) are used in the execution of the process
- Number of application screens: 4 application screens
- Approximately what percentage of the end-to-end process could be automated? This percentage value will be used to calculate the potential time and cost savings. 100% of the process should be automated
- How much of the data used in the process is in a structured digital format? Most of the data is structured and digital
- Number of steps: 40 steps in process

Ease of implementation summary

- Approximately what percentage of the applications used during the process have no direct access to a user interface? 0% of the system (or applications) used in the process are thin-client based
- How many steps in the process could reuse existing Blue Prism objects? If you are not familiar with Blue Prism objects, you can contact a Blue Prism subject matter expert. Some
- Can the applications and any system security measures used during the process be accessed by a digital worker? Applications and systems do not require authentication, or only require a user name and password

Metadata:

- Process analyst: Process analyst
- Process owner: Process owner
- Created date: 2022. 3. 10.
- Status: Archived
- Space: My space
- Assessment group: My group
- Process ID: PAT TEST 001
- Opportunity Type: Operational data processing
- Business function: Supply Chain
- Primary reason for automating: Productivity
- Tags: PAT

작성과 동시에 결과출력
부서별로 작업공간(Space)을 만들어 업무별로 PAT를 분류함

Your processes

- Prioritize**: 0 Potential hours returned
- Review**: 2 Potential hours returned 2316
- Defer**: 1 Potential hours returned 1920

Process analyst	Process owner	Process ID	Business function	Primary reason for automating	Created date	Assessment group	
HongJoo Choi	HongJoo Choi		Supply Chain		2022. 1. 5.	My group	
ssing	HongJoo Choi		Finance		2022. 8. 17.	My group	
ssing	HongJoo Choi	BPTTravel PRX 001	Operations	Productivity	2022. 8. 17.	My group	
ssing	Process analyst	Process owner	PAT TEST 001	Supply Chain	Productivity	2022. 3. 10.	My group

Your spaces

- Add space**
- Remove space**
- Rename space**

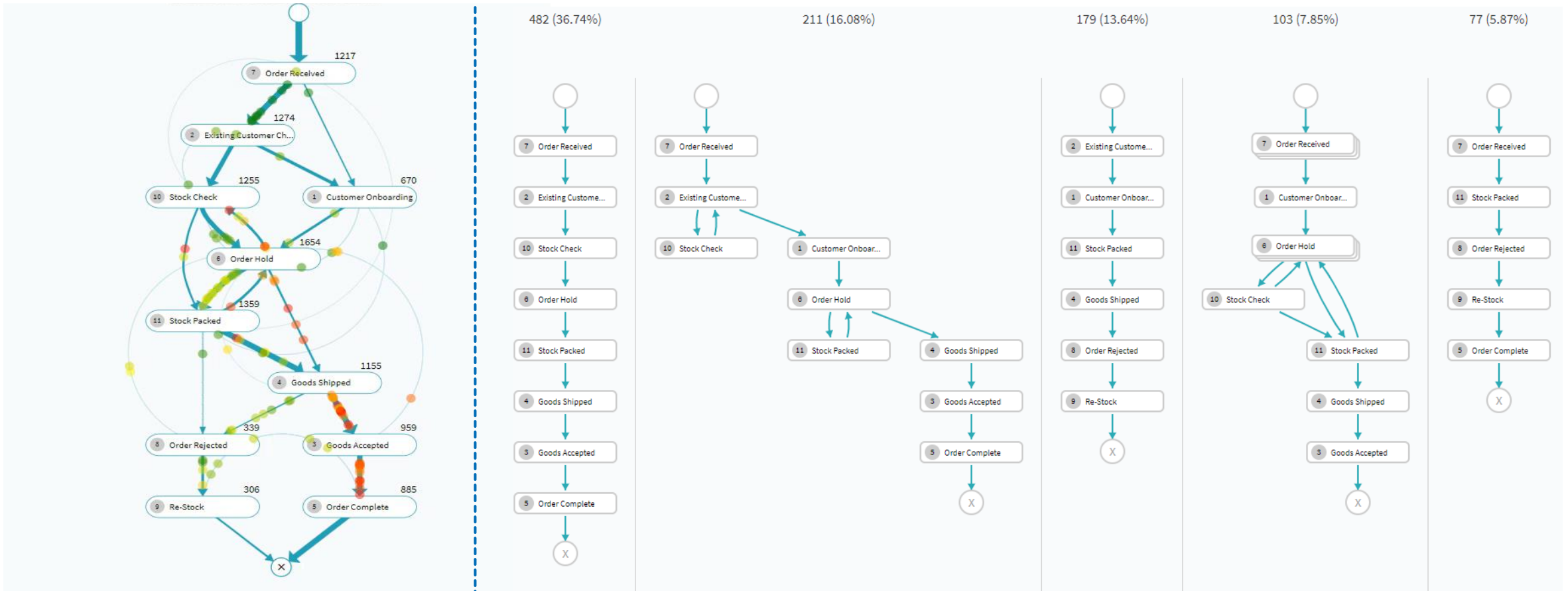
Space	Date created	Created by
Finance (admin)	2022. 8. 17.	HongJoo Choi
My space (admin)	2021. 9. 14.	HongJoo Choi

Spaces per page: 25 | Showing 1-2 of 2 spaces

다른 사람과 작업공간을 공유하고 협업

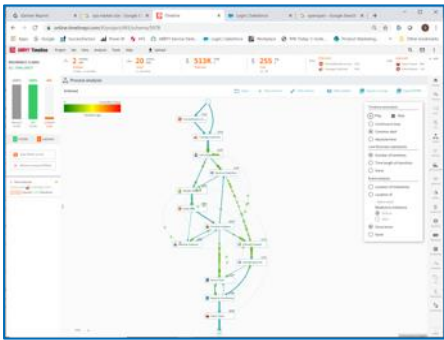
Blue Prism Process Intelligence (BPPI) (1/2)

- 프로세스 마이닝 분야에서 글로벌 리더십을 가진 ABBY의 프로세스 마이닝 솔루션을 블루프리즘 자동화 솔루션과 결합하여 기업 내 프로세스의 종단간 흐름을 시각화하고 프로세스 개선을 위한 Insight 확보.
- 프로세스 마이닝 결과를 Capture의 입력으로 넣어 프로세스 개선을 위한 Task 자동화 수행

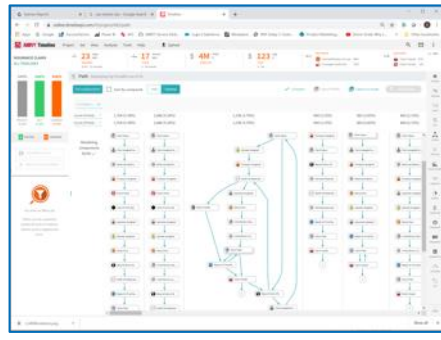


Blue Prism Process Intelligence (BPPI) (2/2)

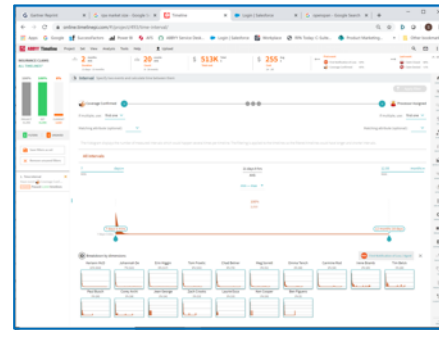
20+ Tools at your fingertips



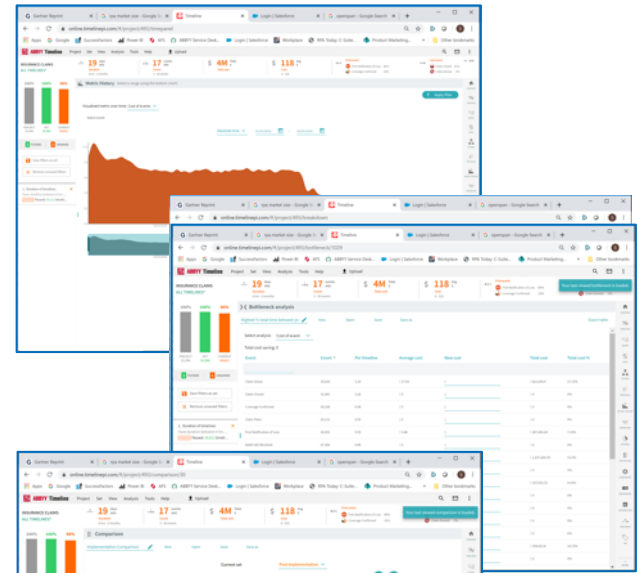
Schema Discovery



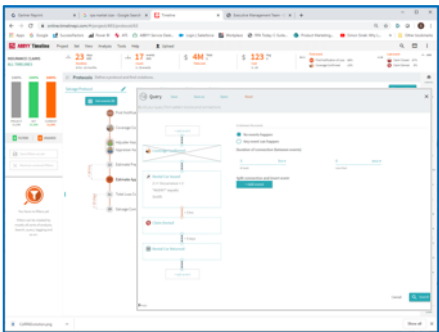
Path Analysis



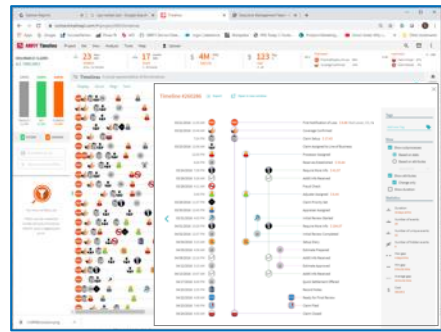
Temporal & Interval Analysis



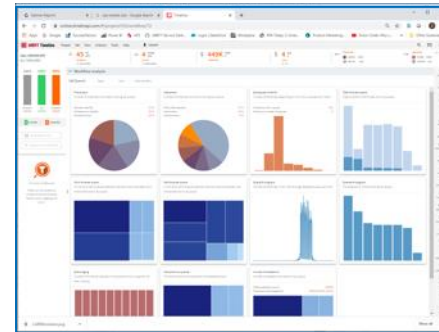
Many more...



Execution Pattern & Protocol Analysis



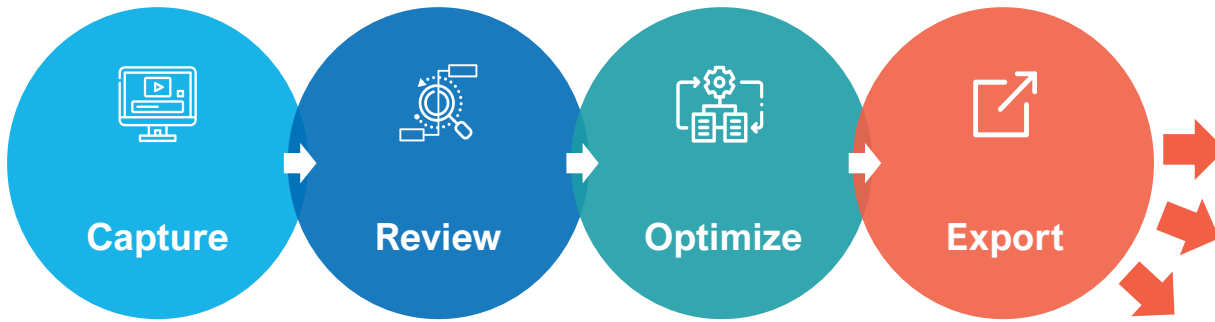
Process & Task Case Analysis



Dashboards & Specialized Analyses

Capture

자동화 업무 정의와 설계단계에서 업무 흐름에 관한 현업과 개발자간 의사소통 오류를 방지하고, 이를 토대로 PDD와 개발 템플릿을 자동 생성함으로써 자동화 구축 생산성을 높임.



현행 업무 담당자가 수행하는 업무 흐름을 녹화

녹화된 업무 화면단위 검토

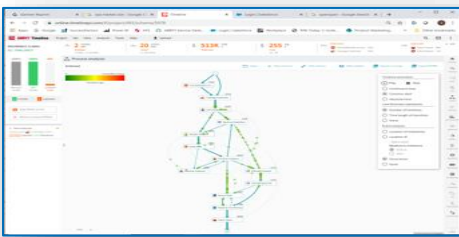
각 화면 단위 설명, 구현에 필요한 프로세스와 오브젝트 상세 정의, 단계별 입출력 정의

결과물 내보내기

→ Capture download

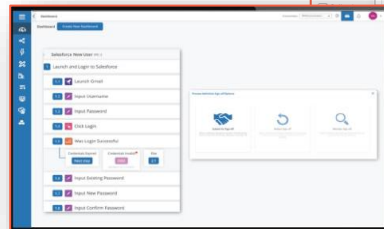


자동화 업무 흐름을 수동으로 녹화하는 대신 BPPI를 이용하여 데이터 기반으로 분석한 데이터를 입력



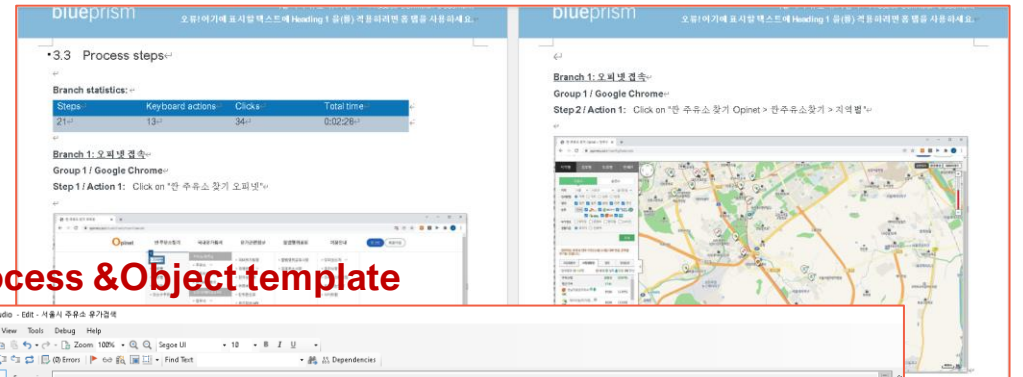
blueprism
Process Intelligence
powered by ABBY Timeline

ALM

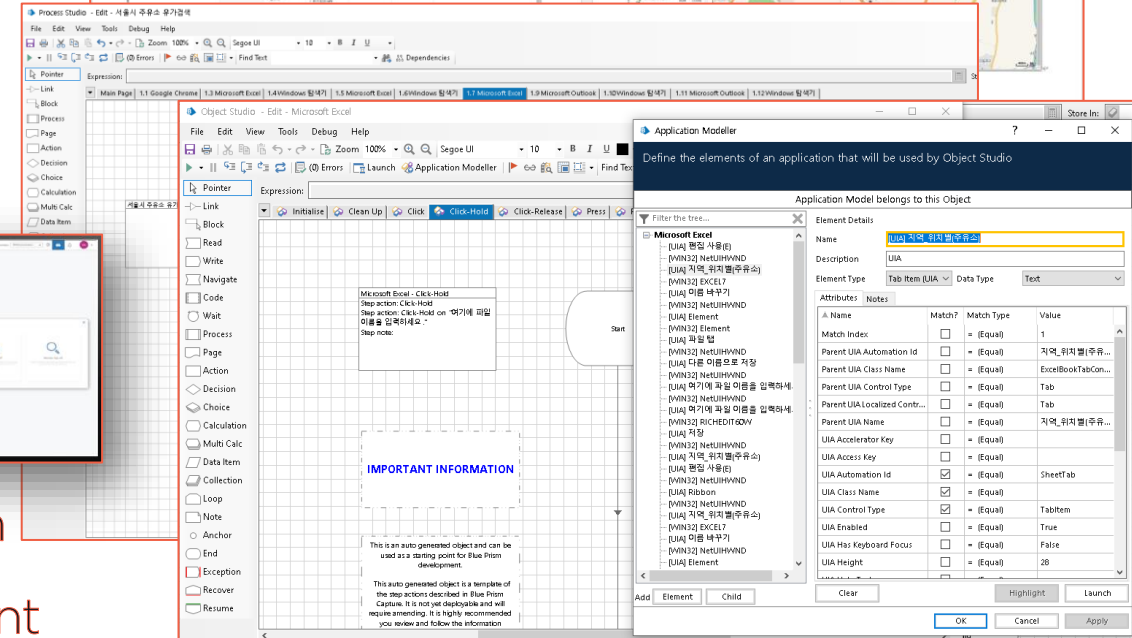


blueprism
Automation Lifecycle Management

PDD

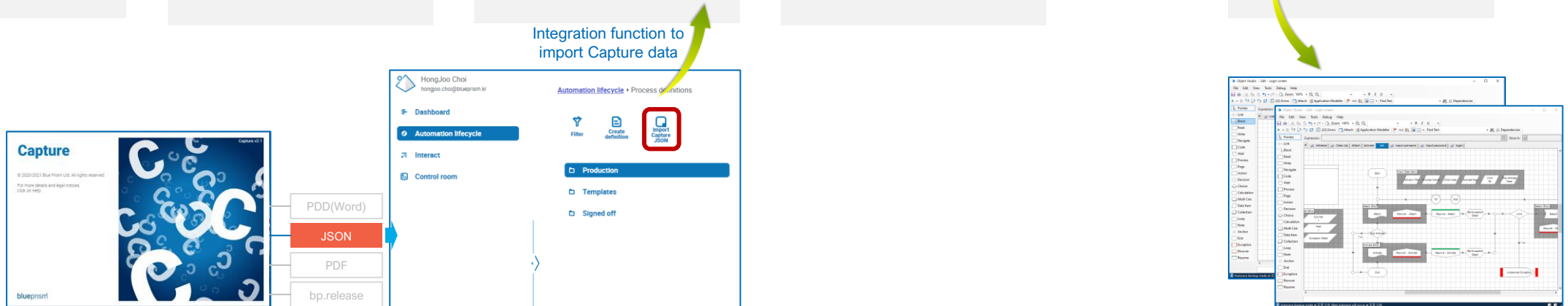


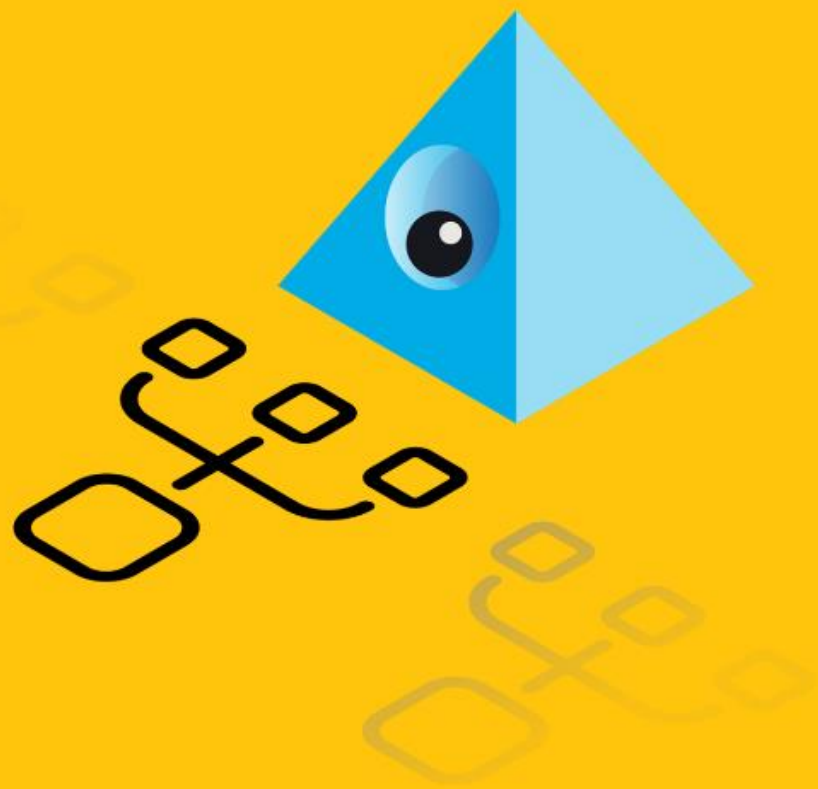
Process & Object template



Automation Lifecycle Management (ALM)

일관성있는 자동화 프로세스 구축을 위한 웹 기반 관리도구로 Capture 결과물을 JSON으로 입력 받아 설계 문서를 생성/편집/관리하고 Wireframer 플러그인을 이용해 개발 템플릿을 출력.



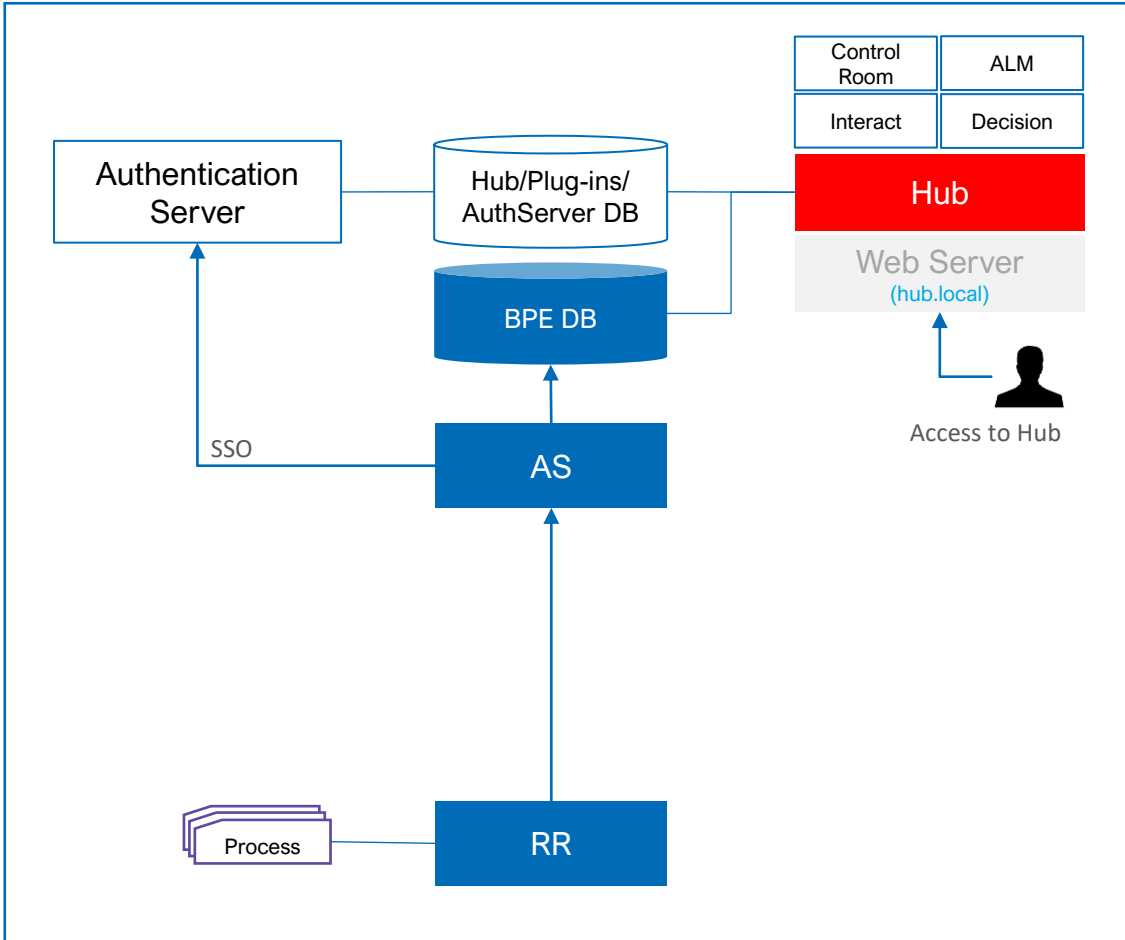


1. Delivery Methodology
2. Blue Prism Dev Tools
3. **Blue Prism flagships**
4. Deployment Architecture

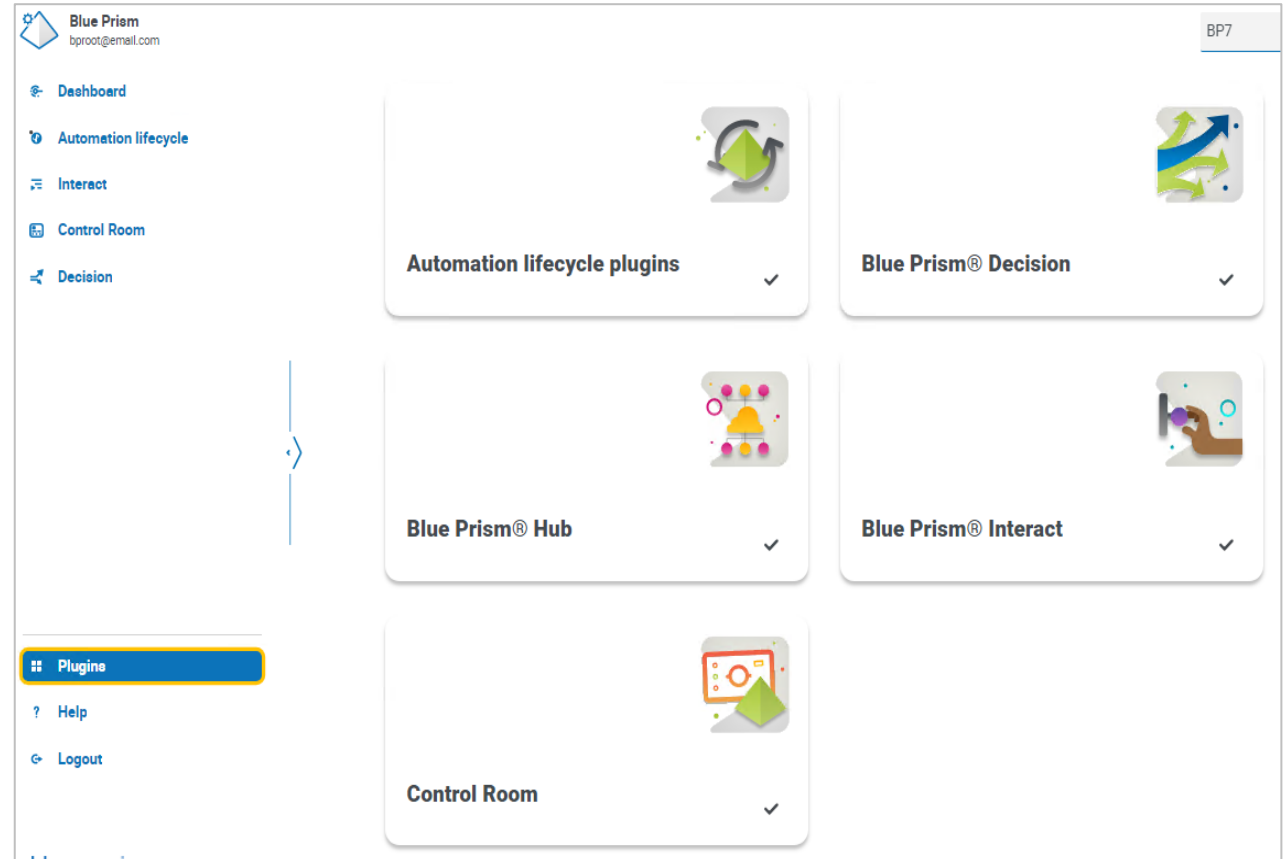
Hub

Blue Prism의 확장된 기능을 제공하는 웹 플랫폼으로 다양한 플러그인을 제공.

Service Diagram



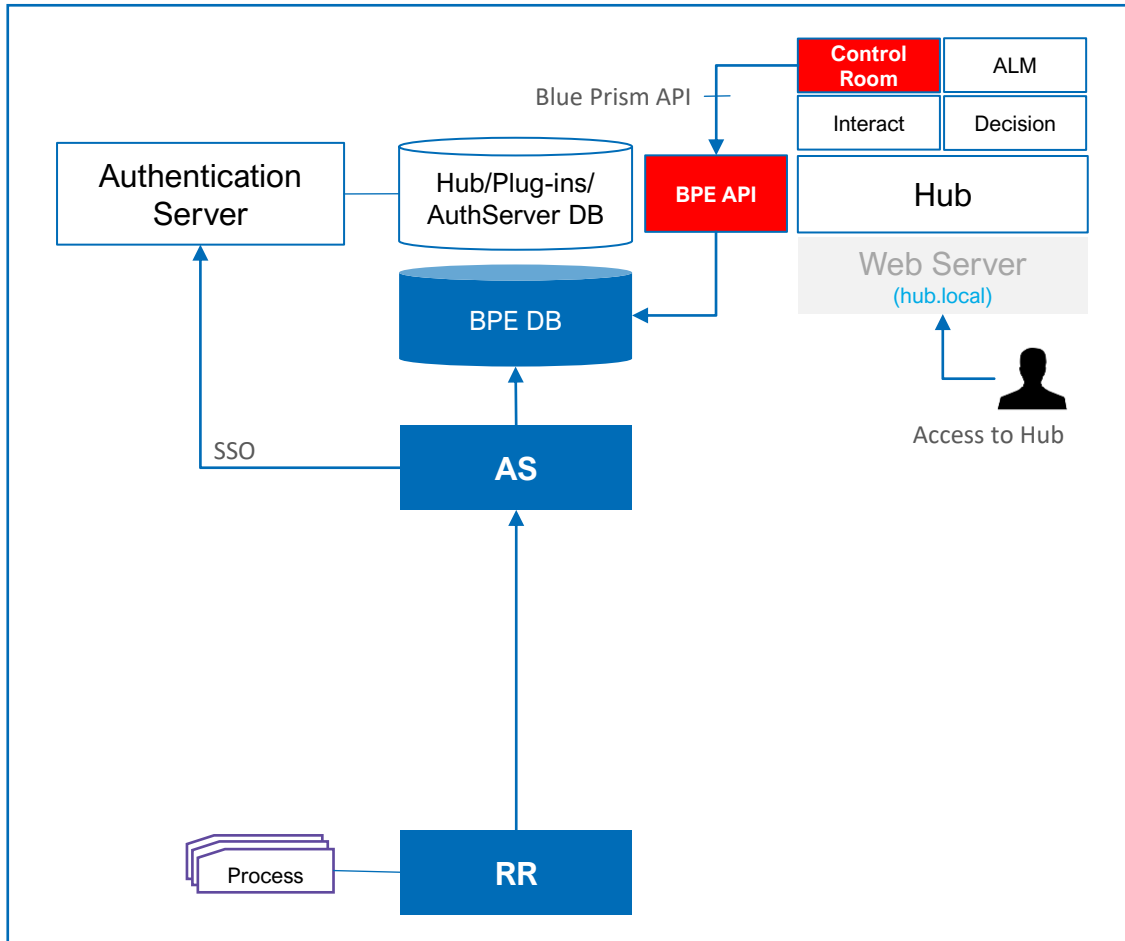
Plug-ins



Control Room@Hub

웹 기반 UX/UI로 Blue Prism 운영 자원 현황을 제공.

Service Diagram



Resources

The screenshot shows the **Control Room** interface for **BP7**. The **Work Queues** section is active, displaying an **Overview** table:

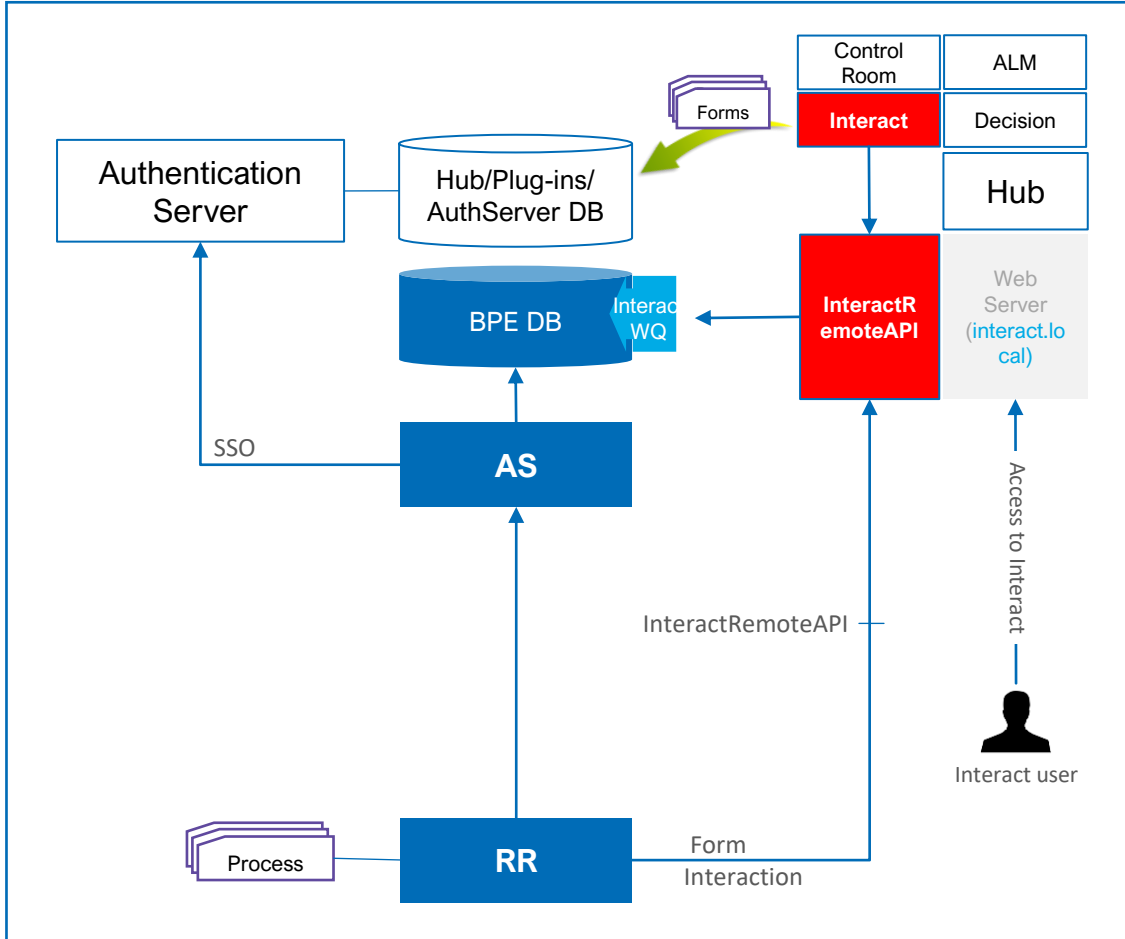
Queue name	Group name	Status	Locked	Completed	Pending	Exception	Average case time
Queue 1		Running	0	0	0	0	00:00:00

Additional interface elements include a sidebar with navigation options (Dashboard, Automation lifecycle, Interact, Decision, Plugins, Help, Logout) and a top navigation bar with user information (Blue Prism, bprout@email.com).

Interact@Hub

자동화 업무 흐름에 따라 휴먼 워커와 디지털 워커가 협업할 수 있는 메커니즘을 제공.

Service Diagram



Use cases

Human Data Supply	Robot Data Supply ★	Human Augmented ★
<ul style="list-style-type: none"> • Trigger ad-hoc report • Handle an address change • Onboard a new starter • Raise a purchase order • Support external/field engineer <p>Blue Prism Interact’s simple form designer makes it easy for people to assign tasks to your digital workforce. It is customizable to ensure it meets your organization’s needs to increase speed and time-to-value.</p>	<ul style="list-style-type: none"> • Prepare reports for engineer callouts • Consolidate data to complete account transfers • Generate patient information reports prior to appointments <p>With Interact, digital robots consolidate data required for a task, then presents it to a human for execution. This removes challenges often associated with multiple systems access, such as errors and delay, which impact the customer experience.</p>	<ul style="list-style-type: none"> • Multiuser authorization • Exception handling and validation • Escalation and notification • Warning and alerting • Human-driven execution flow <p>Should escalation, validation and/or approval be needed for a process automation, Interact provides clear communication to ensure smooth and successful completion of work.</p>

특정 업무 수행에 필요한 데이터를 interact form에 기입하고 DW에게 지시.

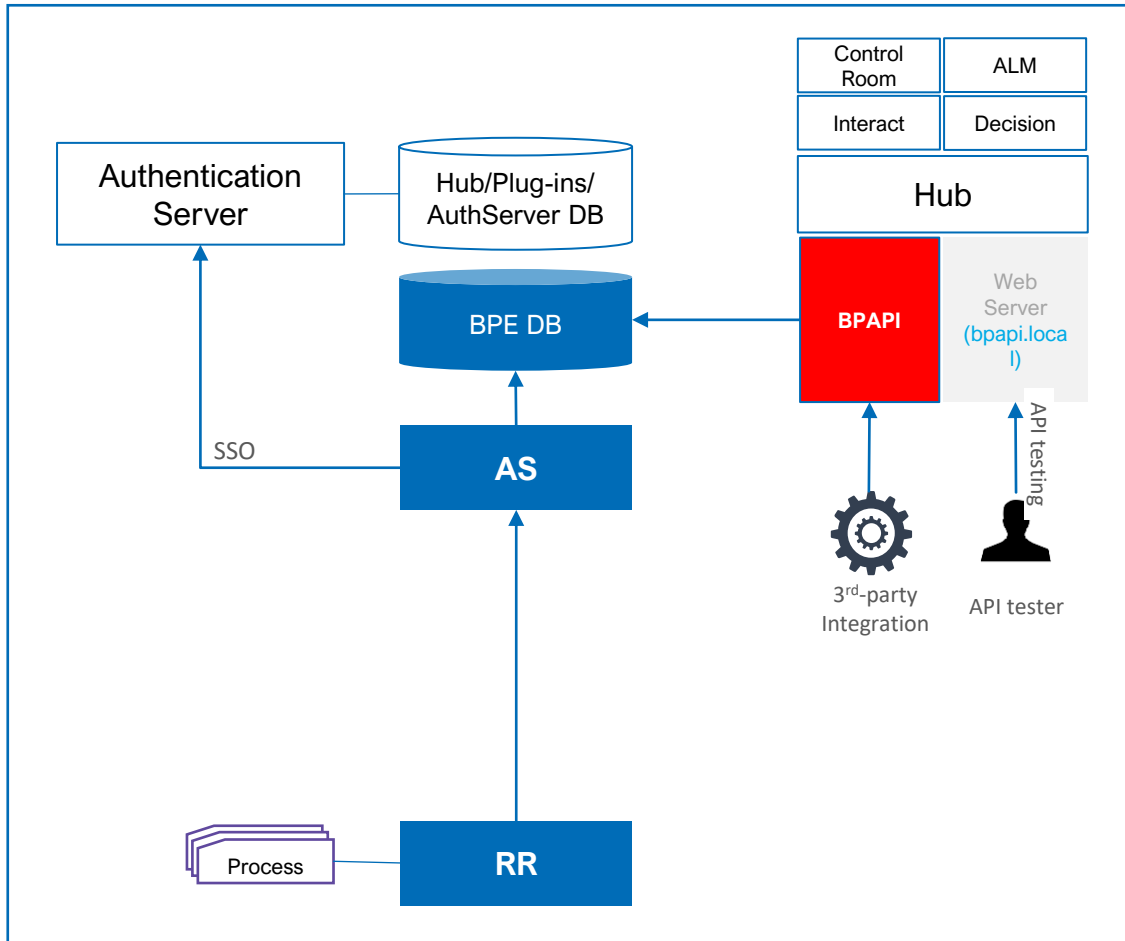
DW가 여러 시스템에서 데이터를 모아 휴먼 워커에게 전달.

업무 흐름상 휴먼 워커의 승인이 필요한 경우 휴먼 워커와 interact Form을 이용해 상호작용.

Blue Prism API

3rd-party 노드가 Blue Prism 자원에 접근하여 필요한 데이터를 획득하고 자동화 프로세스를 제어할 수 있는 기능을 제공.

Service Diagram



API test page (<https://bpapi.local/swagger/ui/index>)

The screenshot shows the Swagger UI for the Blue Prism API. The page title is 'Blue Prism API'. The URL is <https://bpapi.local/swagger/ui/index#/WorkQueues>. The page lists various endpoints and their methods:

- Calendars: Show/Hide | List Operations | Expand Operations
- Dashboards: Show/Hide | List Operations | Expand Operations
- EncryptionSchemes: Show/Hide | List Operations | Expand Operations
- Health: Show/Hide | List Operations | Expand Operations
- Processes: Show/Hide | List Operations | Expand Operations
- Resources: Show/Hide | List Operations | Expand Operations
- ScheduleLogs: Show/Hide | List Operations | Expand Operations
- Schedules: Show/Hide | List Operations | Expand Operations
- ScheduleSessions: Show/Hide | List Operations | Expand Operations
- SessionLogs: Show/Hide | List Operations | Expand Operations
- Sessions: Show/Hide | List Operations | Expand Operations
- TimeZones: Show/Hide | List Operations | Expand Operations
- User: Show/Hide | List Operations | Expand Operations
- WorkQueueItems: Show/Hide | List Operations | Expand Operations
- WorkQueues: Show/Hide | List Operations | Expand Operations

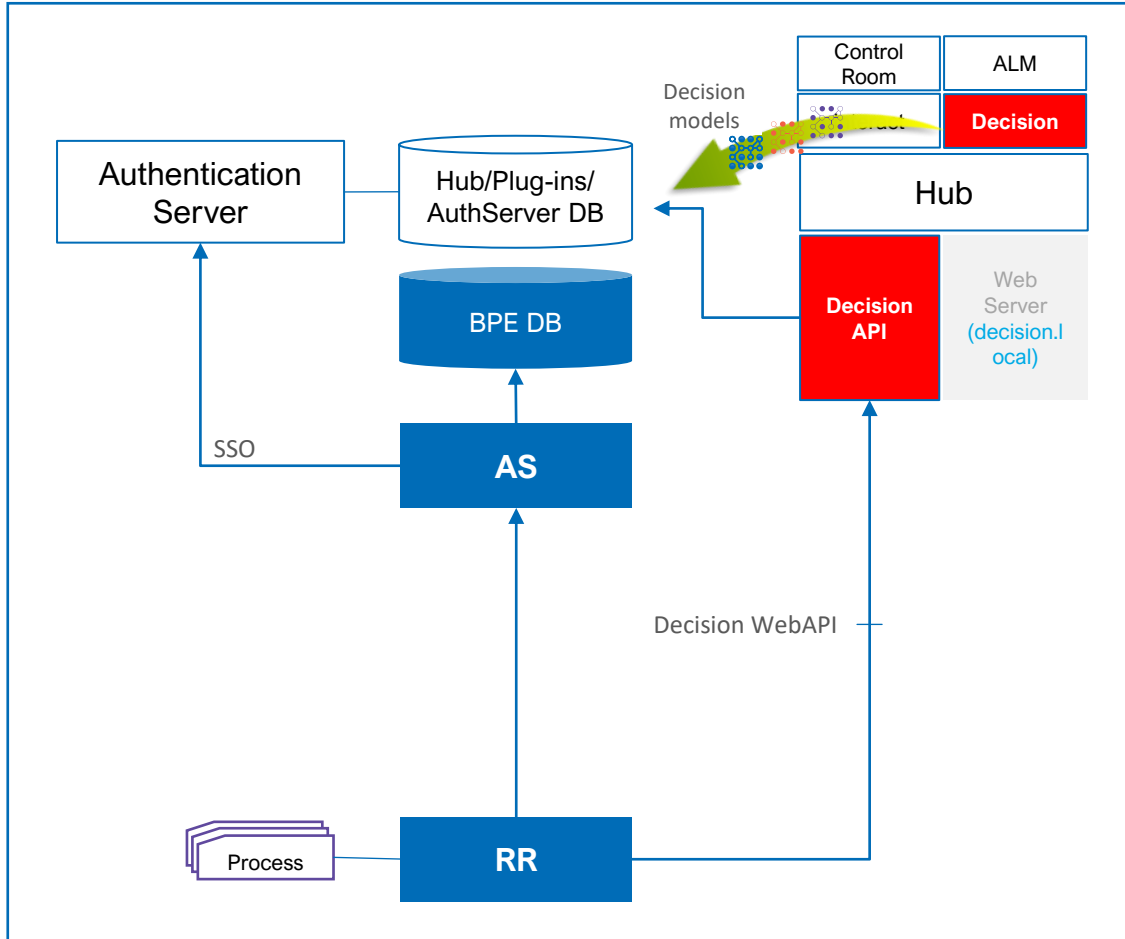
The 'WorkQueues' section is expanded, showing the following endpoints and methods:

- GET /api/v7/workqueues
- POST /api/v7/workqueues
- DELETE /api/v7/workqueues/{workQueueId}
- GET /api/v7/workqueues/{workQueueId}
- PATCH /api/v7/workqueues/{workQueueId}

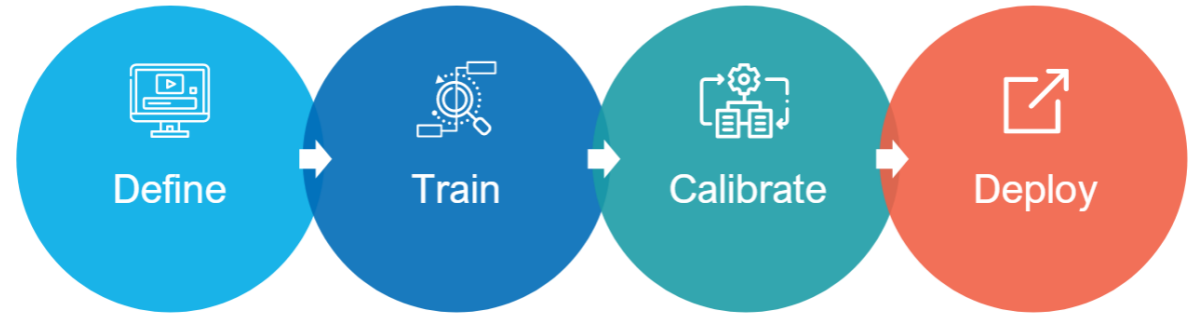
Decision

전통적인 프로그래밍 기법(if, else) 대신 ML 기반 Decision 모델링으로 자동화 업무 로직의 복잡성을 낮추고 확장성을 높임.

Service Diagram



Decision Modeling 절차

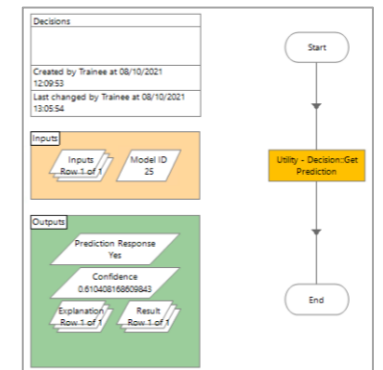


Define your model name, add input variables and highlight the decision that needs to be made

Create rules and provide decisions based on the variables

Ensure the correct outcomes are generated

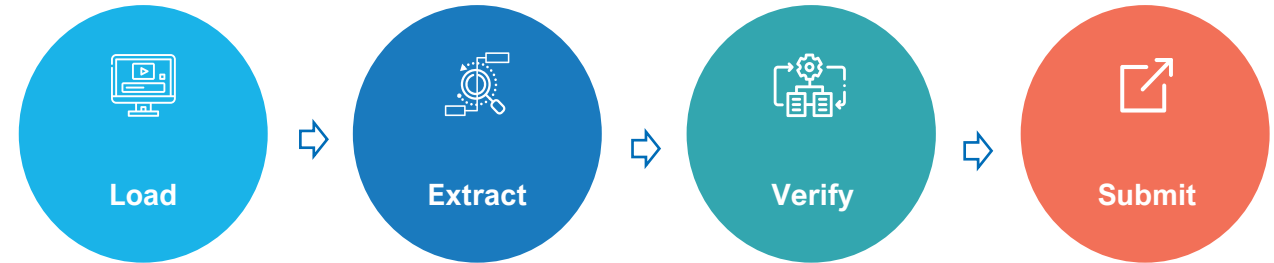
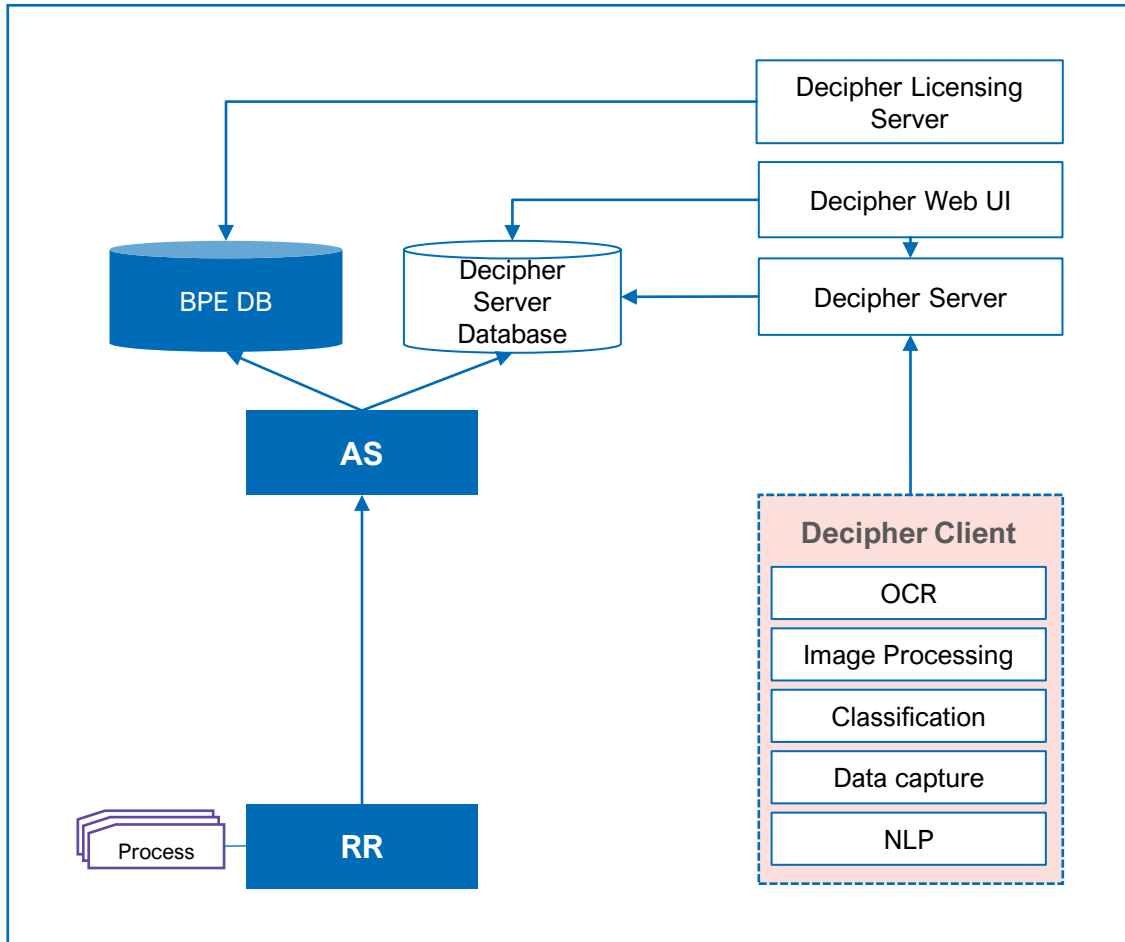
Integrate into Process through Deploy VBO



Decipher IDP

대량의 문서를 빠른 시간안에 읽어 데이터를 추출하고 ML기반 알고리즘을 기반으로 문자를 인식, 자동화 업무 처리를 위해 필요한 데이터를 디지털 워커에서 제공.

Service Diagram



Documents are submitted to Decipher IDP through the SS&C Blue Prism's IAP.

OCR and ML recognize, classify and extract data from the documents.

Decipher IDP flags documents and data values that must be verified by a business user because the confidence threshold was not met.

Validated results are returned to a work queue where the data can be used in RPA processes.

Document Type: Invoice

VENDOR: Test

DATE: 30 Sep 2019

REF NO: 00246

PO N: Load Batch

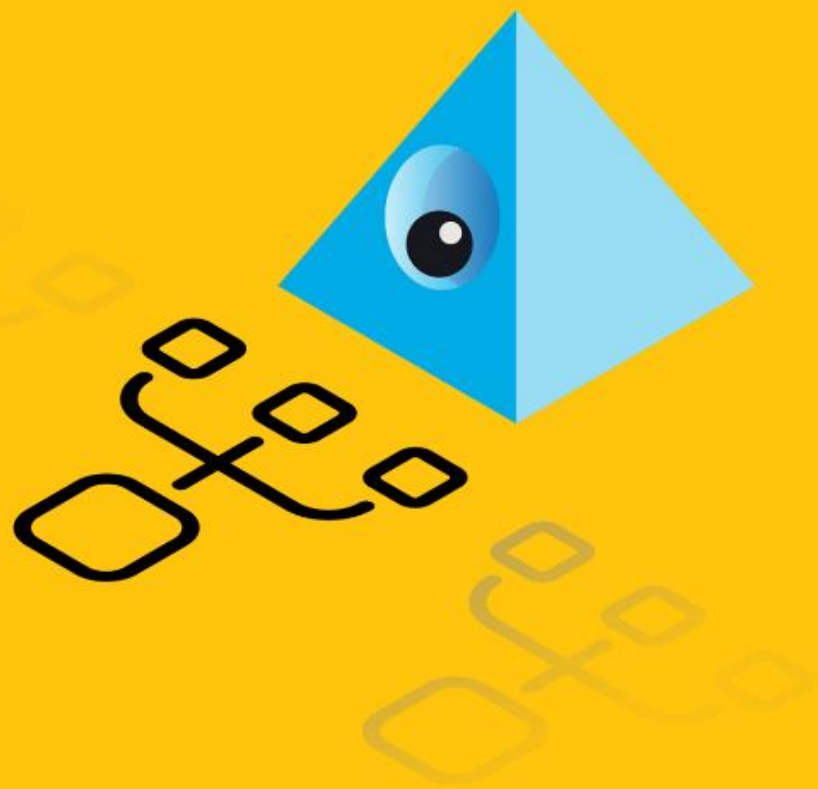
SUBTOTAL: 2195

TAX: 439

SHIPPING AND HANDLING: 100

AMOUNT DUE: 2734

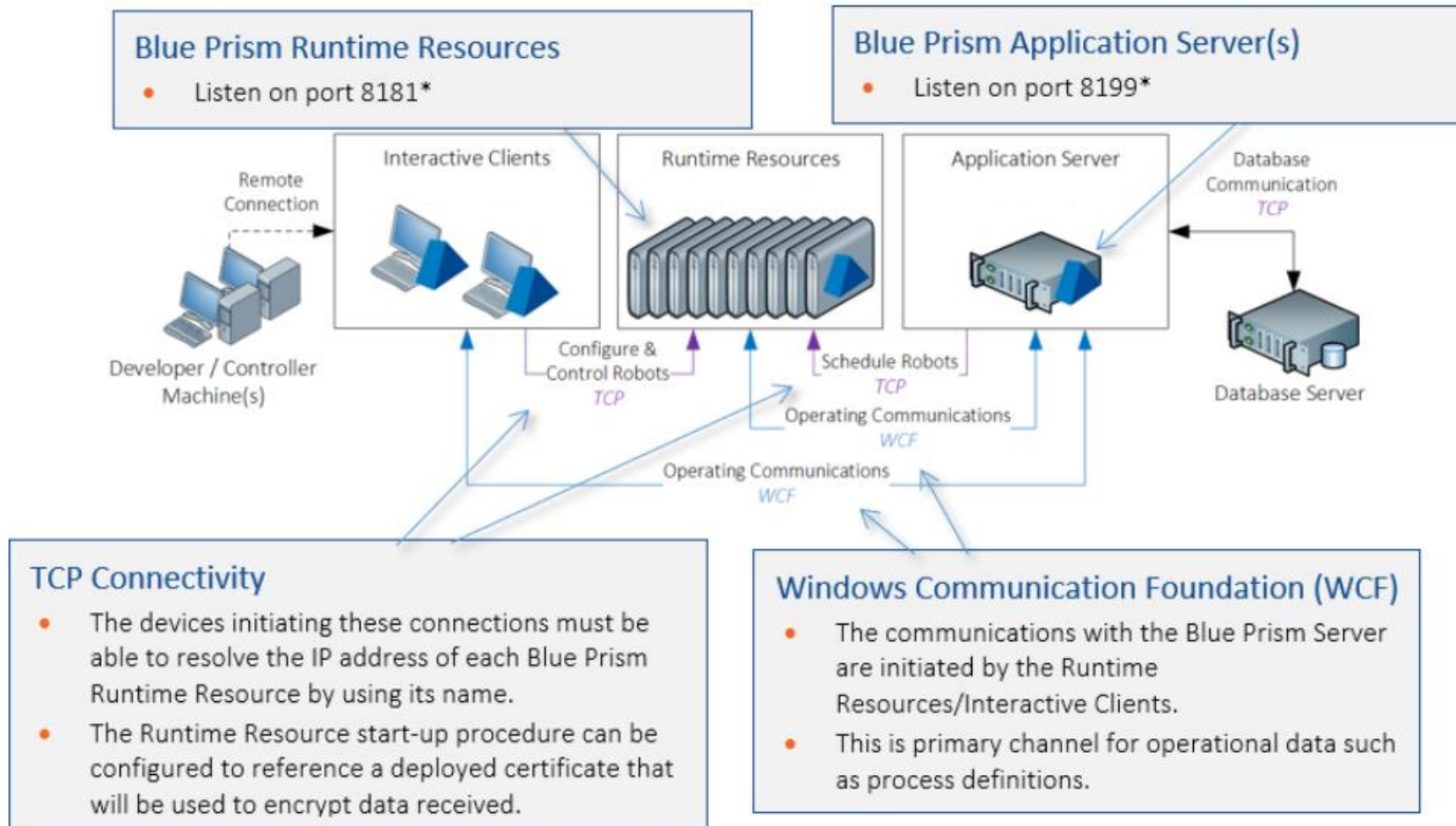
ITEM	DESCRIPTION	QTY	UNIT PRICE	LINE TOTAL
1	tyres	4	125	500
2	Turbo	1	570	570
3	Intercooler	1	200	200
4	Wastegate	1	150	150
5	intake	1	110	110
6	Boost pipe kit	1	75	75
7	plugs	4	15	60
8	Ecu	1	320	320



1. Delivery Methodology
2. Blue Prism Dev Tools
3. Blue Prism flagships
4. **Deployment Architecture**

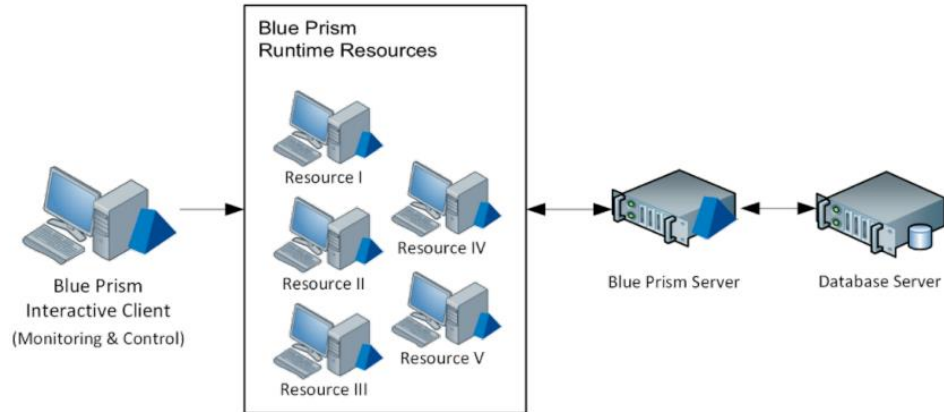
Deployment Architecture

Blue Prism 형상은 Server-Client 구조를 가지며 Runtime Resource와 Interact Client가 논리적으로 분리.

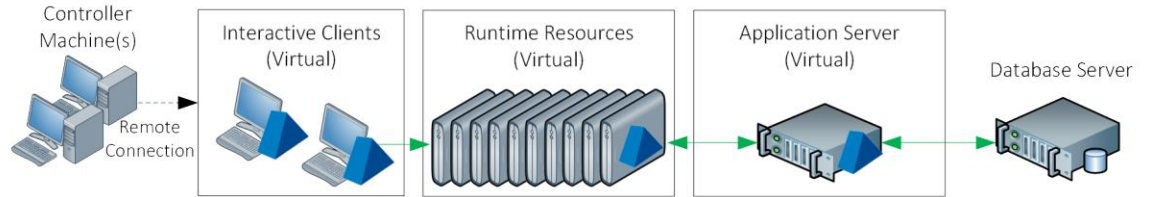


Deployment Examples

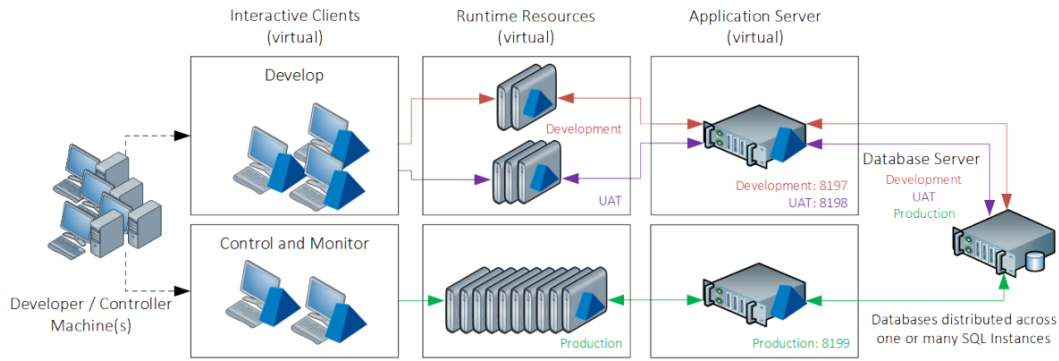
Simple On-Premise deployment



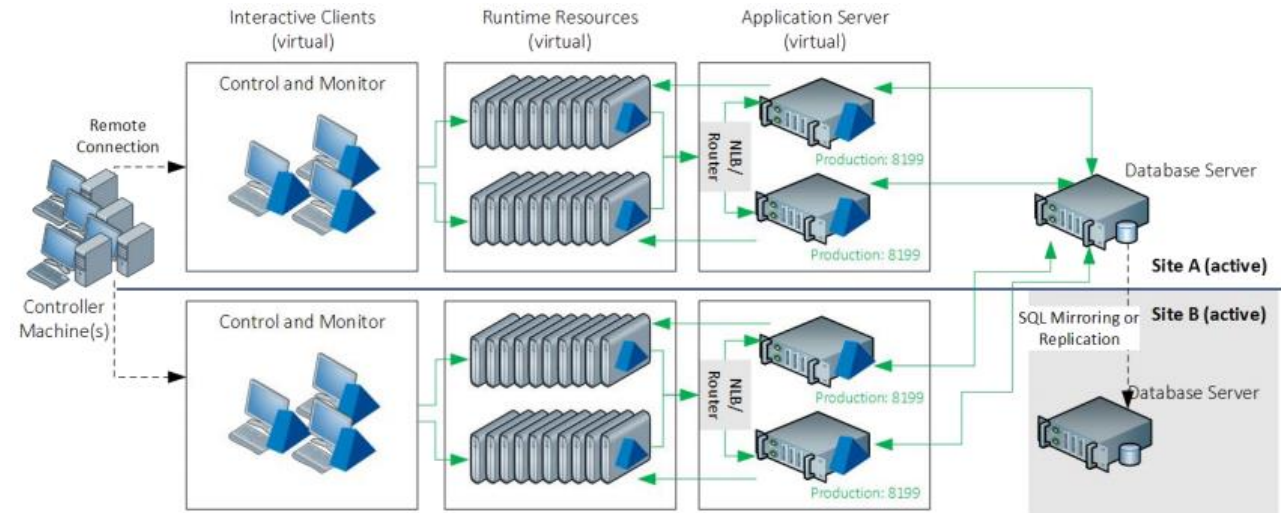
Virtualized deployment for a large amount of Runtime Resources

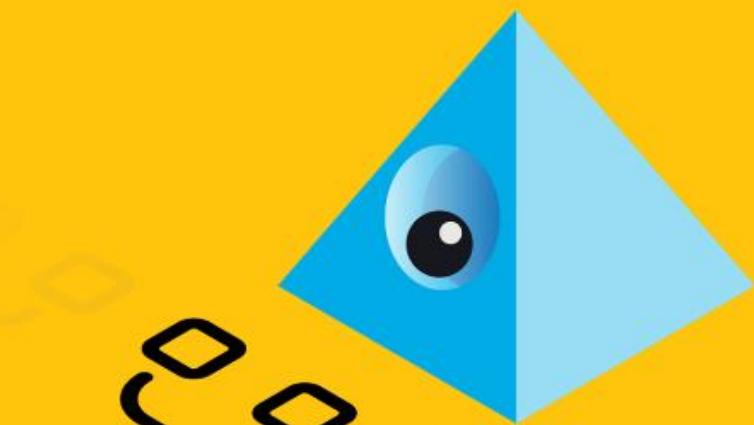


Separated deployment for Dev. and Prod. environment.



Separated deployment with Redundancy configuration





1. Delivery Methodology
2. Blue Prism Dev Tools
3. Blue Prism flagships
4. Deployment Architecture
5. **Blue Prism Portal**

ON/OFFLINE DOCUMENTS 각종 매뉴얼 및 가이드 문서

SS&C | blueprism

Home Community Product Robotic Operating Model **Documents** Customer Support University

Are you ready for the Next Generation?
VIRTUAL EVENT | May 18, 2023
Join us for one of our most important product launch events yet!

REGISTER NOW

blueprism University
Blue Prism University
Need some training? Want to get certified, or just improve your intelligent automation.

blueprism Community
Blue Prism Documentation
Our online documentation provides extensive information about Blue Prism.

blueprism Community
Blue Prism Community
The Community is the ideal place to share best practices, knowledge, insight and ideas.

↘
 각종 매뉴얼 및 가이드 관련 문서 검색 및 다운로드

SS&C | blueprism

Home Community Product Robotic Operating Model **Documents** Customer Support University

Version: Any

Guides

Booklet: Unlock Your Potential Through Process Discovery
Booklet: Unlock Your Potential Through Process Discovery

Acceptance Test Plan Template
provides set of acceptance crite
Acceptance Test Plan Template

Application Assessment Review Template
The Application Assessment provi
Application Assessment Review Template

Associate Developer Certification Path

Search Documents

Title
[Red box around search input]

Category
- Please select -

Version
7
6
5
4.2

Document language
English

Apply

↙
 각종 매뉴얼 및 가이드 관련 온라인 문서 검색

SS&C | Blue Prism documentation

Blue Prism products

- Blue Prism product compatibility
- Blue Prism Enterprise
- Blue Prism Desktop
- Blue Prism Trial and Blue Prism Learning Edition
- Capture
- Decipher IDP
- Blue Prism Hub platform (including Interact, ALM and other plugins)
- Blue Prism Cloud
- Process Assessment Tool (PAT)
- Process Intelligence
- Service Assist
- Installation
- Blue Prism products architecture
- Other documents

Welcome to SS&C Blue Prism documentation

This site provides links to all versions of the online help and includes details of third-party software that is used in SS&C Blue Prism. Click the tile for the required product to see the help systems available to you.

Blue Prism

Blue Prism Desktop

Capture

Decipher

Blue Prism Hub Platform

Blue Prism Cloud

Process Assessment Tool

Process Intelligence

Service Assist

Watch our installation videos

TROUBLESHOOTING

기술자료 검색

SS&C | blueprism

Home Community Product Robotic Operating Model Document **Customer Support** University

Are you ready for the Next Generation?
VIRTUAL EVENT | May 18, 2023
Join us for one of our most important product launch events yet!

REGISTER NOW

blueprism University
Blue Prism University
Need some training? Want to get certified, or just improve your intelligent automation.

blueprism Documentation
Blue Prism Documentation
Our online documentation provides extensive guidance about setting up and

blueprism Community
Blue Prism Community
The Community is the ideal place to share best practices, knowledge, insights and

온라인
기술문서(Knowledge Base) 키워드 검색

SS&C | blueprism

Home 지식 기반 티켓 티켓 제출 English

안녕하세요, 무엇을 도와드릴까요?
여기에 검색어를 입력하세요....

[UPDATED 30-MAR-23 - PLEASE READ] URGENT NOTIFICATION RELATED TO USE OF CHROME AND EDGE BROWSERS AS PART OF BLUE PRISM AUTOMATIONS

아티클 찾아보기
방법을 탐색하여 지식 기반에서 모범 사례를 학습하세요

모든 티켓 보기
모든 티켓의 진행 상황과 지원 팀과의 상호 작용을 추적하세요

티켓 제출
지원 티켓 양식을 작성하여 문제를 설명하세요

최고 인기 아티클

[UPDATED 02-MAY-23 - PLEASE READ] URGENT NOTIFICATION RELATED TO USE OF...

Known issues in Blue Prism Version 7.1 releases
수정일 04 May

Further information on Manifest V3 and Browser Extensions
수정일 02 May

글로벌 커뮤니티 키워드 검색

Featured Communities

Blue Prism RPA Product
4136 THREADS 1036 MEMBERS

Getting Started
1.4K THREADS 814 MEMBERS

Chorus BPM, Document Automation and UX Builder

Explore more Communities +

Latest Activity Events Blogs

Community News

RE: BPPI : Option for Capture 4.0
Dear Hunter, Well noted. Thanks for your answer. I will record my Task and try to use Export to capture. Best regards
DHYEONG KIM 28 MINUTES AGO

RE: Not link to the loop-end , is there a mistake in logic?
Hi Huan XU - There is no error in the logic if the intended result was just reading the first row in the collection and the only thing I would add was renaming the loop stage instead of generic name Loop...
HARISH M AN HOUR AGO

Popular Topics

코리아 커뮤니티 키워드 검색

Home Communities Content Community Programs Events About Community

Korea Community

Korea Community에서는 Blue Prism Korea 주관으로 운영되며, Blue Prism의 소식을 빠르게 접하실 수 있으며, 다양한 정보 및 소통 역할로 운영됩니다.

커뮤니티 토크 284 자료 참고 129 블로그 1 이벤트 0 멤버 230

안녕하세요! Blue Prism, Korea Community입니다

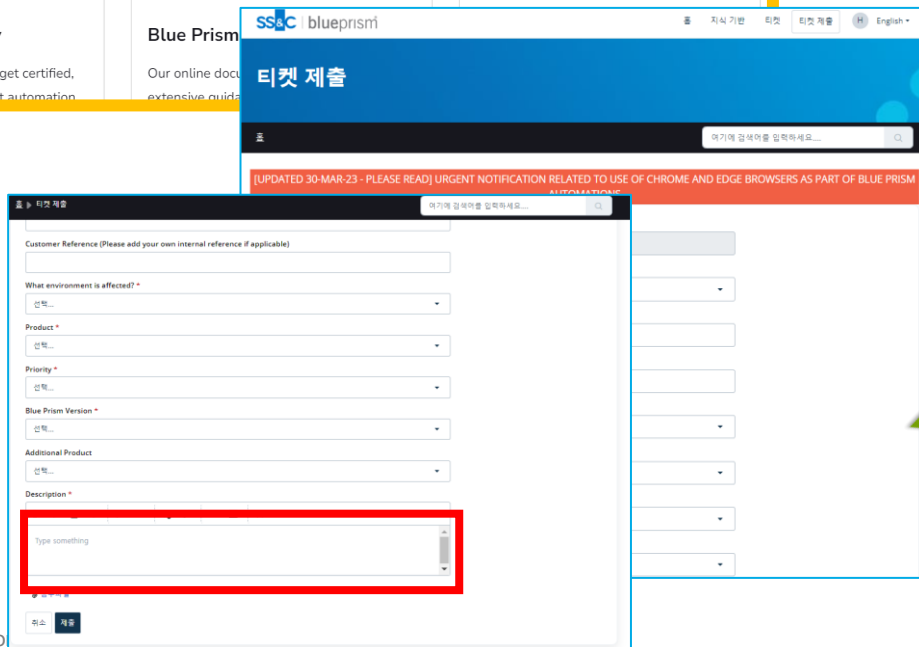
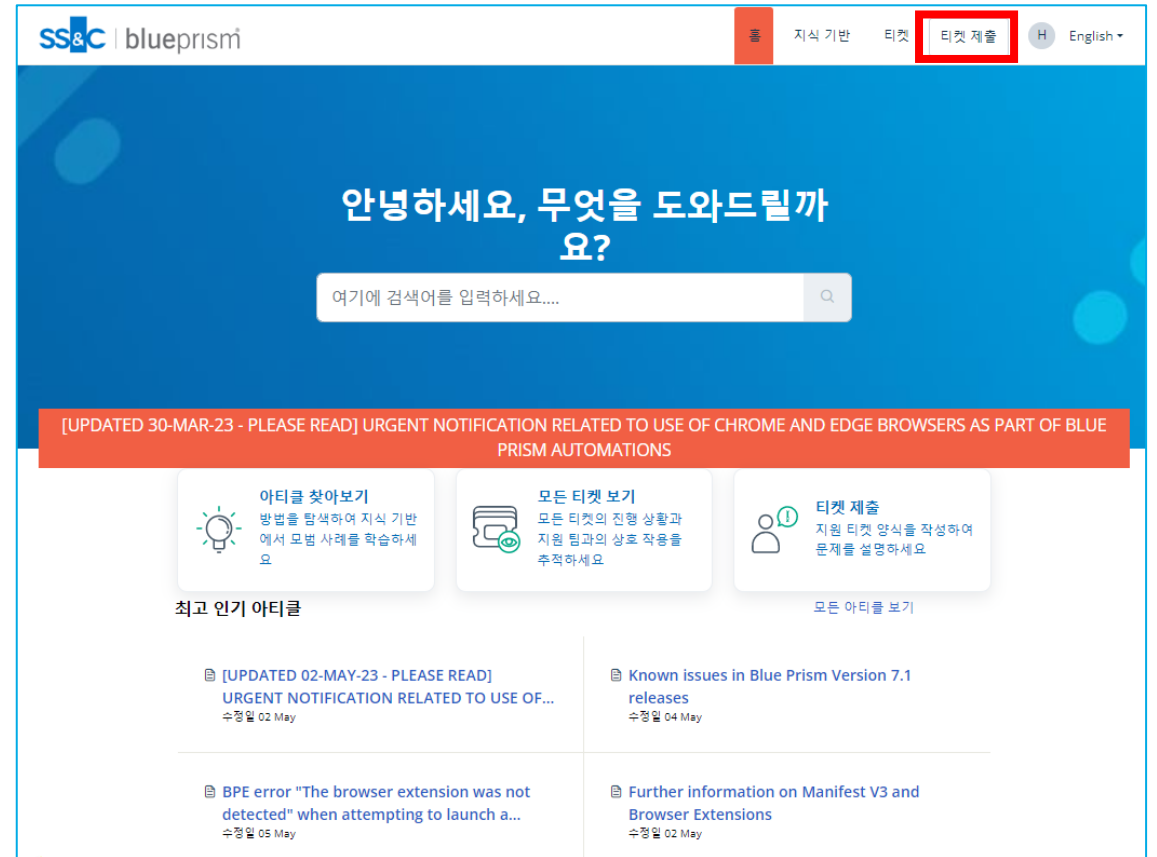
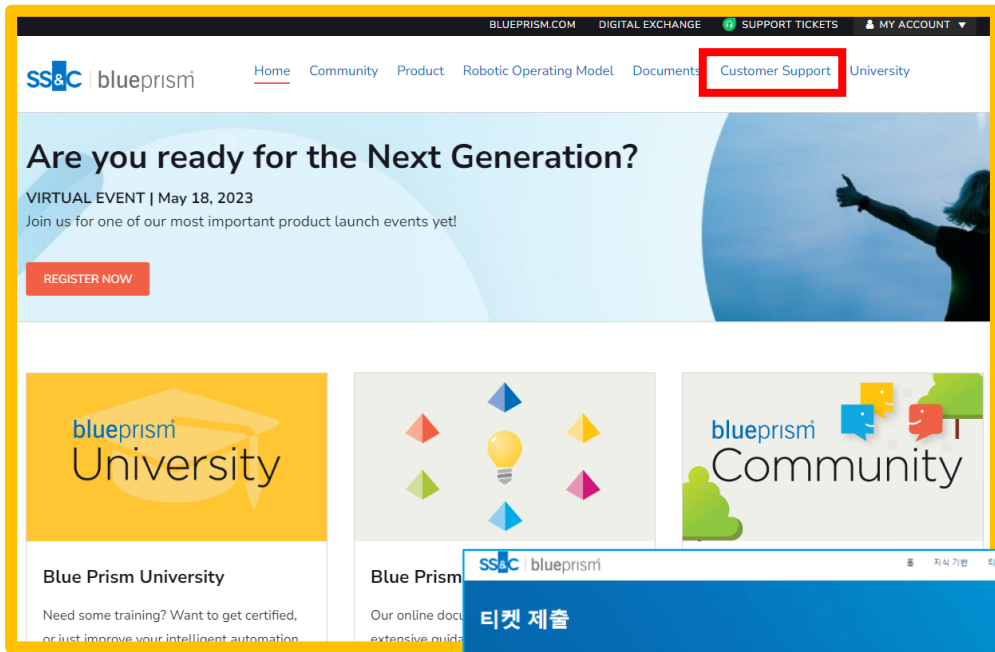
Korea Community에서는 Blue Prism과 Blue Prism Korea 다양한 최신 소식을 확인하실 수 있으며, Blue Prism을 공유했던 사례이나, 기술적인 이슈를 공유하고 논의하실 수 있는 소통의 장으로써 운영됩니다.

자동화(RPA) 3년차, 왜 프로젝트 확신이 어려울까?

회사의 RPA가 구석에서만 사용됨이 지는 까닭은 Korea Newsletter

TICKET MANAGEMENT SYSTEM

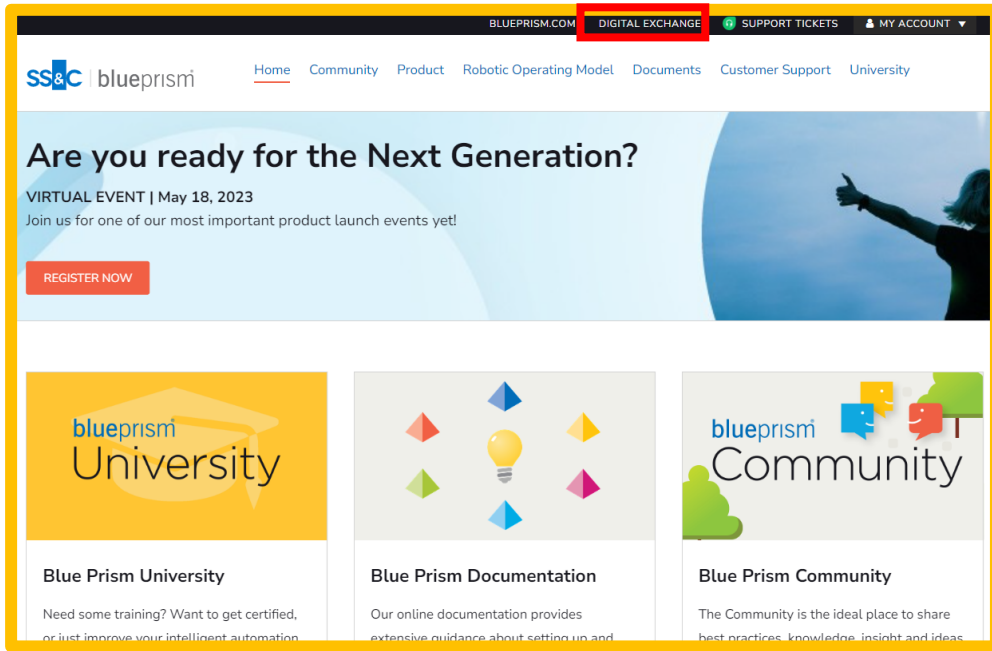
이슈 해결을 위한 글로벌 티켓 시스템 활용



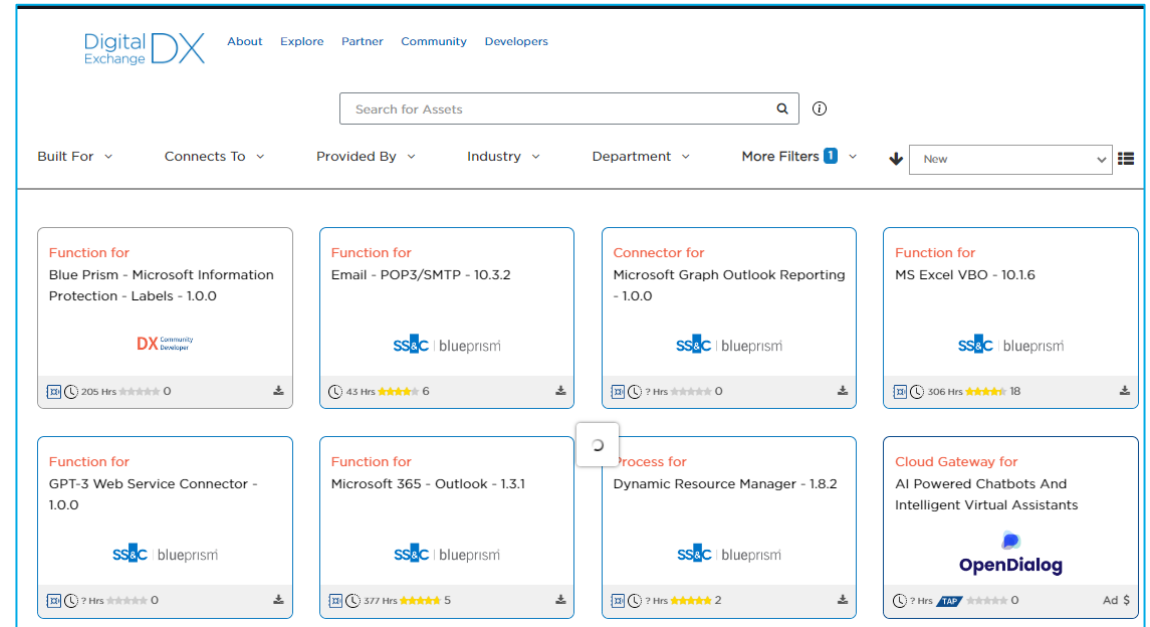
각 문항을 충실히 기록하고, 본문에 이슈에 관해 상세히 기술.
 이슈 관련 자료를 미리 수집하여 첨부.
 예시) 스크린샷, 에러메시지, 윈도우 이벤트 로그, BP Diagnostics, DB 테이블 사용량 통계 등

DIGITAL EXCHANGE

다양한 3-rd party 비즈니스 오브젝트 활용



공개된 스토어에서
더욱 다양한
비즈니스 오브젝트
다운로드 및 활용



ENTERPRISE RPA ECOSYSTEM AND MARKETPLACE

TIME TO VALUE, IMPROVED MARGINS

SECURE INTELLIGENT AUTOMATION at SPEED & SCALE



Matching Buyers to Sellers

- 3,125 customers
- 1,570 partners
- 45,000+ users
- 100 TAP Partners
- 1,200+ assets launched

**Faster.
Better.
Cheaper.**

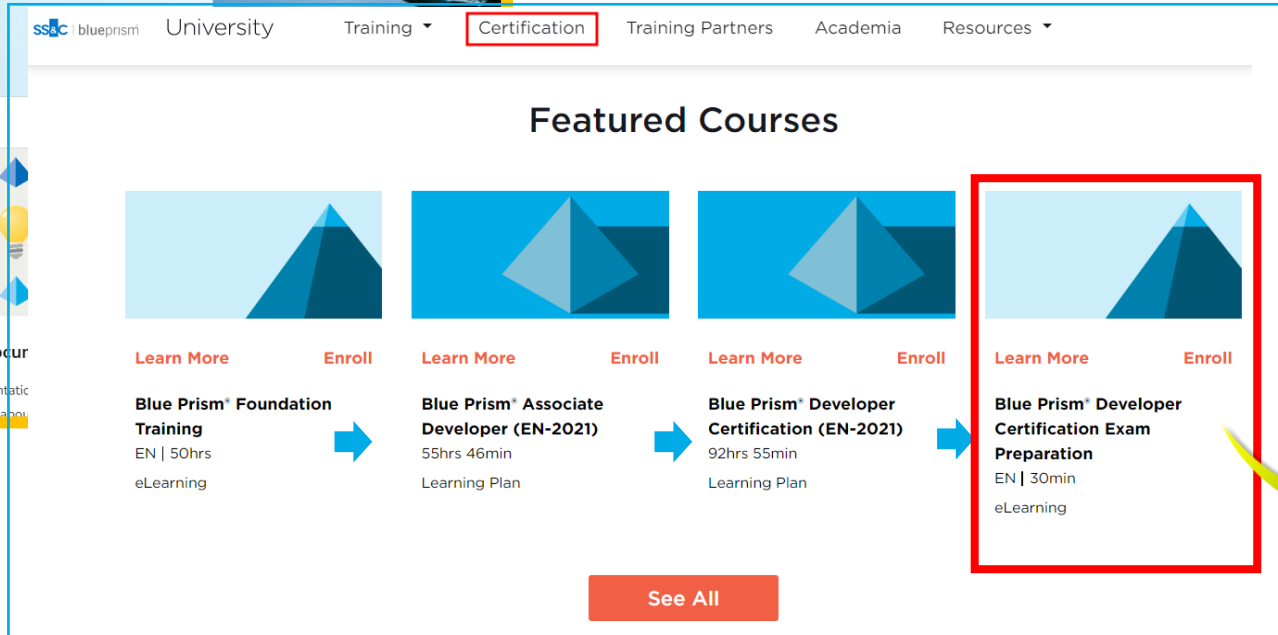
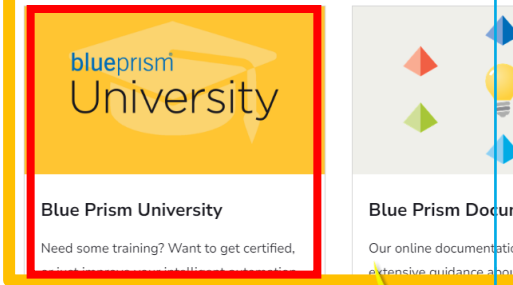
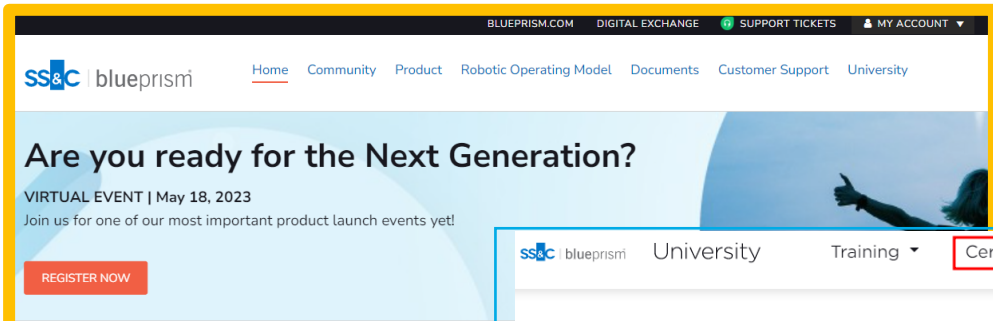
Choose any three

blueprism
Digital Exchange
- Private -

- 50,000+ downloads
- “Works with” Connectors, Processes, Functions, AI Skills
- DX can save 8 – 24 hours of build time per asset
- Self-service TAP onboarding
- Developer portal/community

SELF-TRAINING

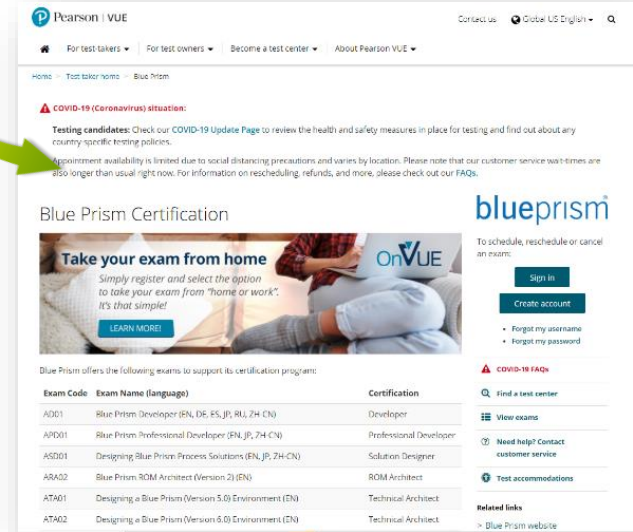
자가학습을 위한 온라인 강좌



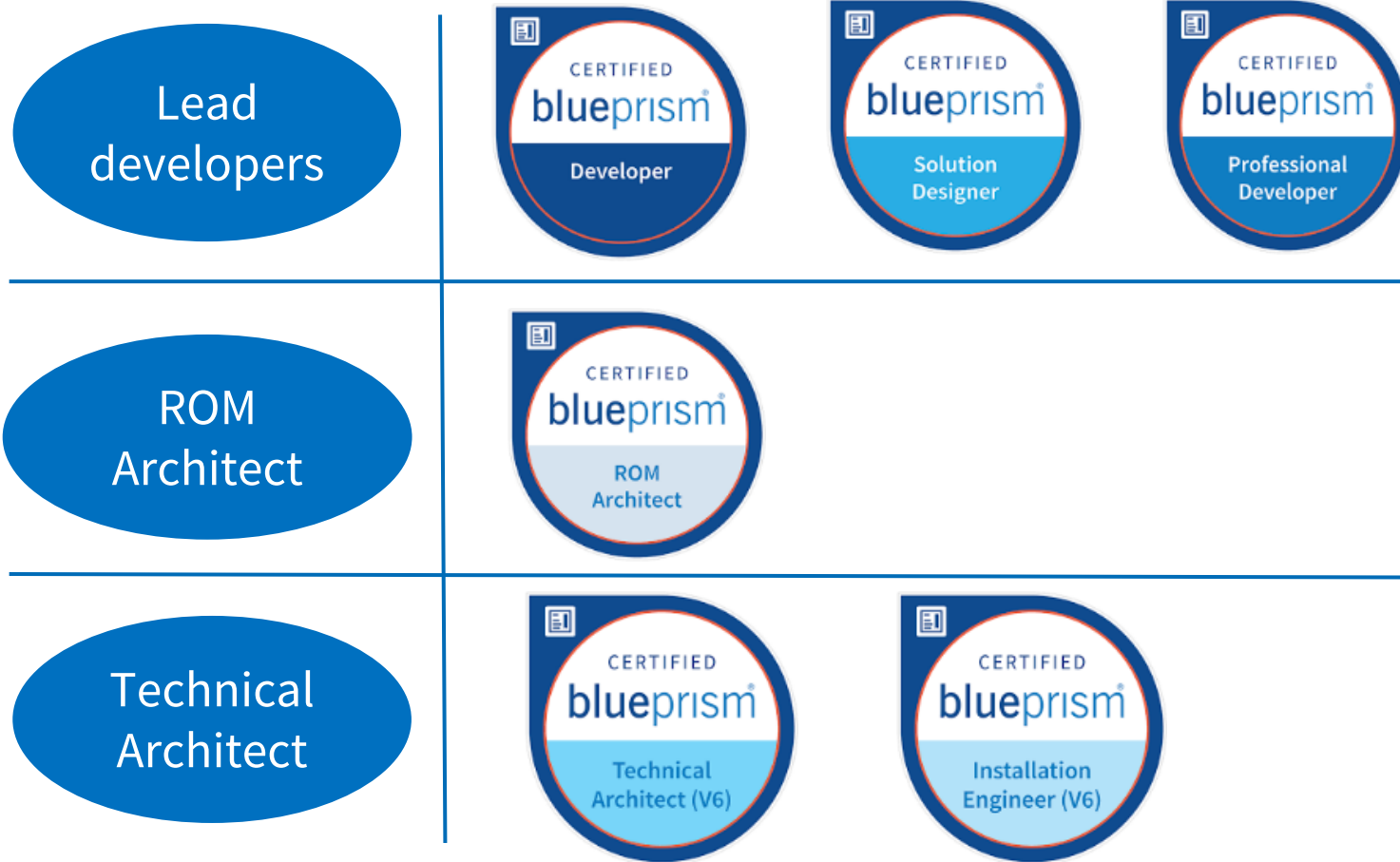
Blue Prism Learning Edition을 포함하여, 개발자를 위한 기초교육에서 심화교육까지 필요한 모든 강의 콘텐츠를 제공하여 언제 어디서든 Self-Training이 가능한 환경 마련.



Pearson|VUE
(<https://home.pearsonvue.com/blueprism>)



BLUE PRISM LEADERSHIP 전문가 리더십

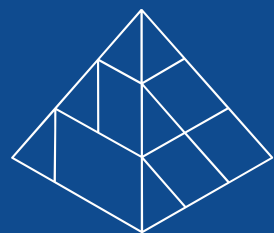


Please use your **work** email address during registration:

 **Pearson VUE**
Authorised Test Centre

<https://home.pearsonvue.com/blueprism>

 **cclaim**



blueprism[®]

A Digital Workforce for Every Enterprise