

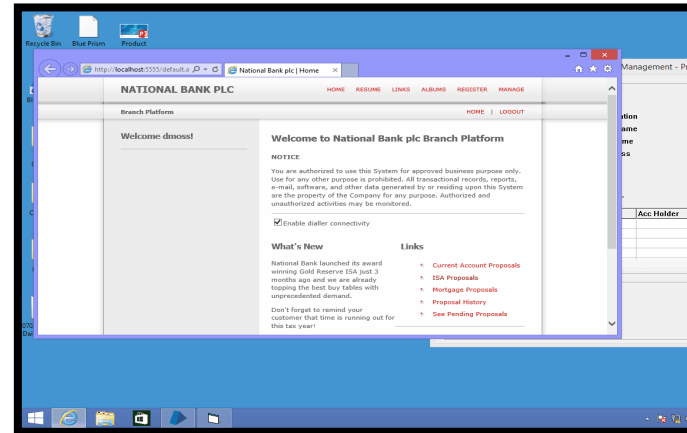
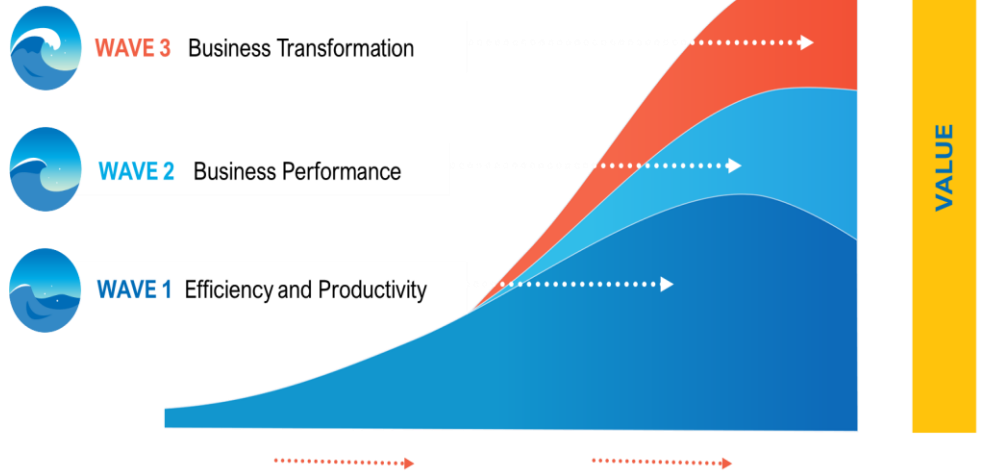
# How to Get Started – Blue Prism Methodology



# How to Get Started – Blue Prism Methodology



## Introduction to Digital Workforce®



## Why?

- Understand the concept and how it could deliver value


## What?

- Blue Prism Overview
- Demonstration
- Typical use cases
- Example activities
- What next?

# How to Get Started – Blue Prism Methodology



## Process Selection

						
Process	Process Name	Short Process Description	Systems / Applications Involved in the Process	Duration of Process (AHT) (Mins)	Frequency of Process (per day / per week)	How many people are currently working on this process
Process #1	Updating distribution payment and 1099 details	From list of distributions, open relius and each distribution transaction. Update payment details for each custodian and payment type, update 1099 info, update fees as necessary	Relius, excel	2-3 minutes	75/375	2
Process #2	Enter cash termination distribution requests into MPC	Identify list of distributions ready to process, login to MPC, open plan, find participant, enter distribution details	MPC, PlanConnect	5	50/250	2
Process #3	Enter loan requests into MPC	Identify list of loans ready to process, login to MPC, open plan, find participant, enter loan details	MPC, PlanConnect	5	50/250	2
Process #4	Classifying trust activity	Find trust deposits and disbursements matching with PC detail items and link them	PlanConnect	1 minute	500/2500	14
Process #5	Enrollment Form Enter	Download enrollment forms from document vault, save to directory, enter into MPC	PlanConnect document vault, MPC, read form	5 minutes	20/100	1
Process #6	SFTP Files load to vault	Look for new files in multiple SFTP directories, upload file to document vault for correct plan	File Server, MPC	2-3 minutes	30/150	1
Process #7	Reversing eligibilities from a list of file	From Relius' global transactions, select the appropriate eligibility transaction(s) and select the "Reverse" button	Relius, excel list		not feasible to do it manually on an on-going basis	
Process #8	Download Trust reports	Login to the custodian's website, navigate to the statement section, select the plan, select the report to download, save to client's directory	Custodian's website, File Server	2-3 minutes	# of Clients per month quarter year	2
Process #9	Update checkbox after fund changes	Open the plan in Relius, select Plan Specs, select each distribution type, navigate to the 3rd tab Trading/Suspension, select source/investment button, select "All Investments" button, save	Relius, excel list	2-3 minutes	variable - when a large group of plans have fund changes	1-2

## Why?

- Identify and prioritize process candidates
- Define where to start

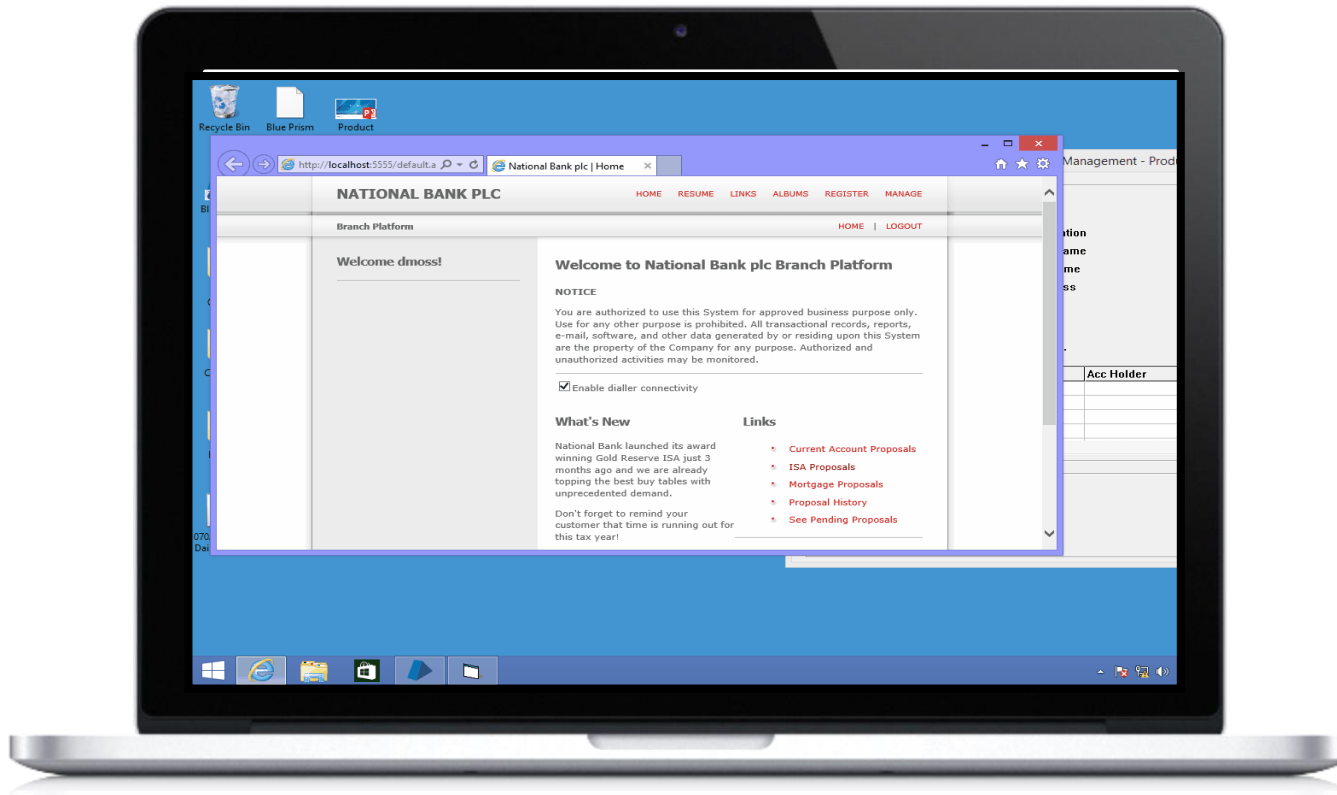
## What?

- Consultant-led workshop

# How to Get Started – Blue Prism Methodology



## Deep Dive



## Why?

- Validate viability and complexity

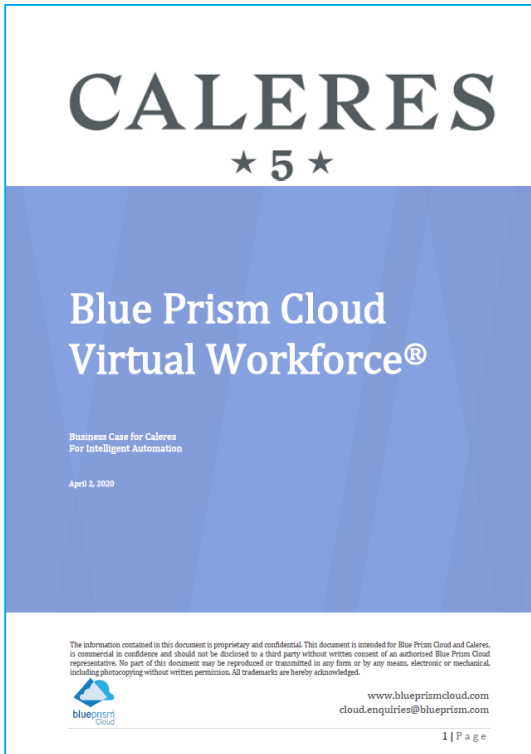
## What?

- Detailed process walkthrough
- Identification of applications and systems in use
- Evaluation of Time to Automate (TTA)

# How to Get Started – Blue Prism Methodology



## Business Case



### 6. Caleres Cost Savings

#### 36 Months Analysis

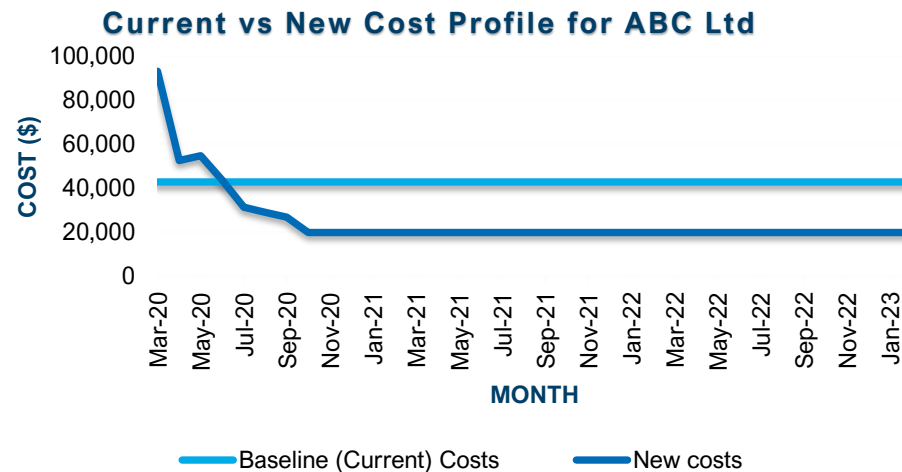
Projected Savings: \$1,841,103

Projected Costs: \$604,800

Total Costs Saving: \$1,234,303

% Cost Reduction: 67%

*\*This only includes the human element of processing. Additional business costs, such as application user licenses for outsourced employees, are not included, so the actual savings would be higher than these figures.*



## Why?

- Establish baseline as-is costs
- Establish effort and investment required
- Provide cost justification for platform

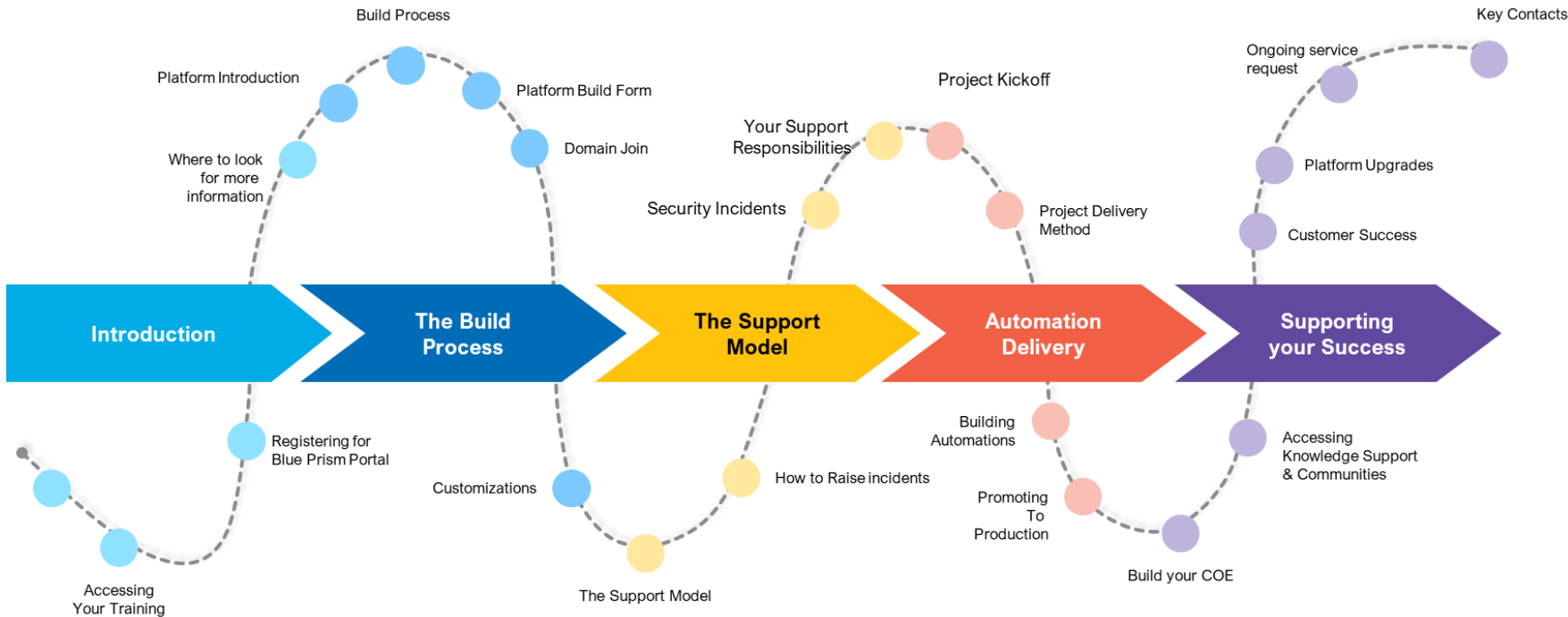
## What?

- Proposal and business case for approval

# How to Get Started – Blue Prism Methodology



## Phase One Deployment



### Why?

- Rapid deployment

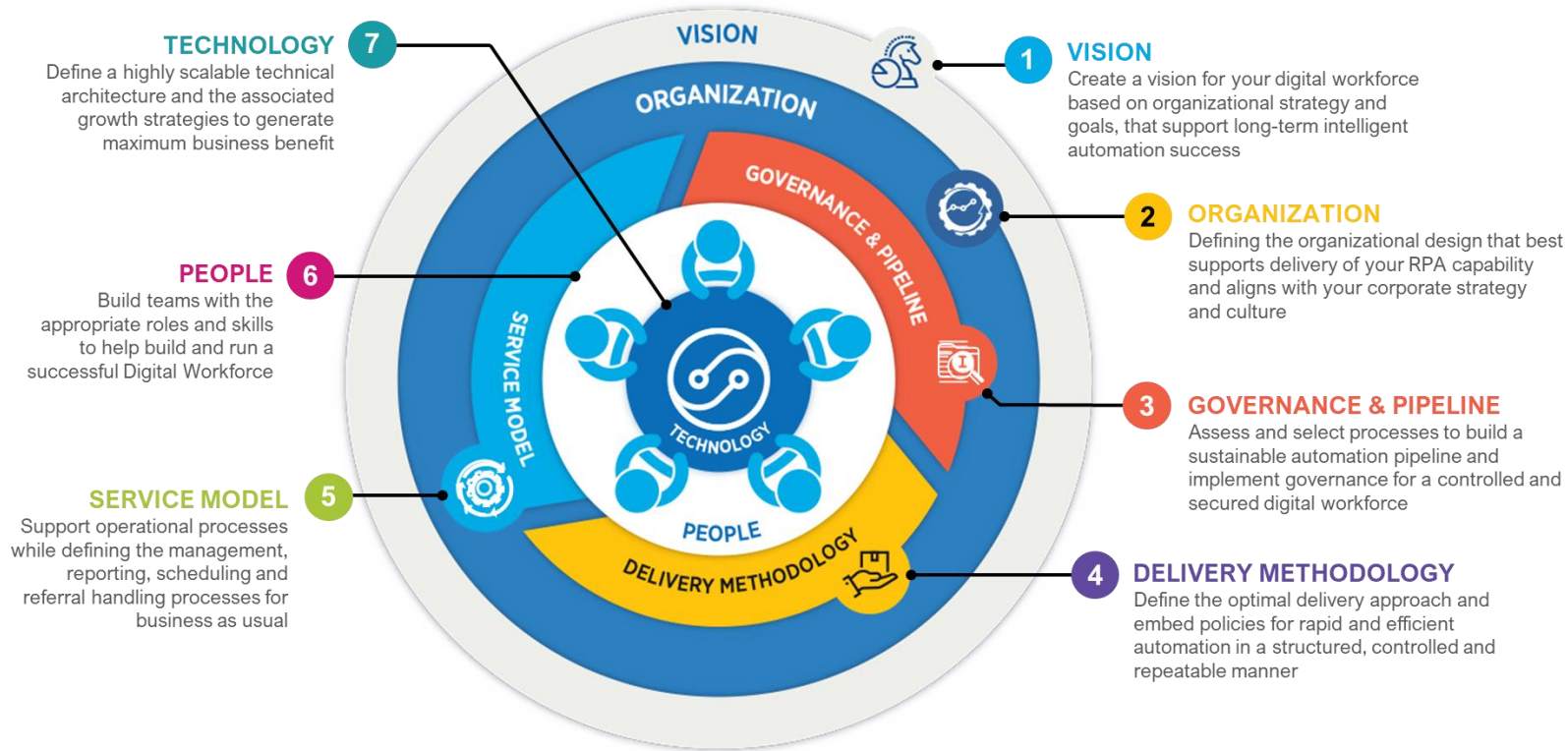
### What?

- Configuration of platform
- Implementation of initial process(es)
- Education and enablement
- Production running

# How to Get Started – Blue Prism Methodology



## Strategic Roadmap & Robotic Operating Model (ROM)



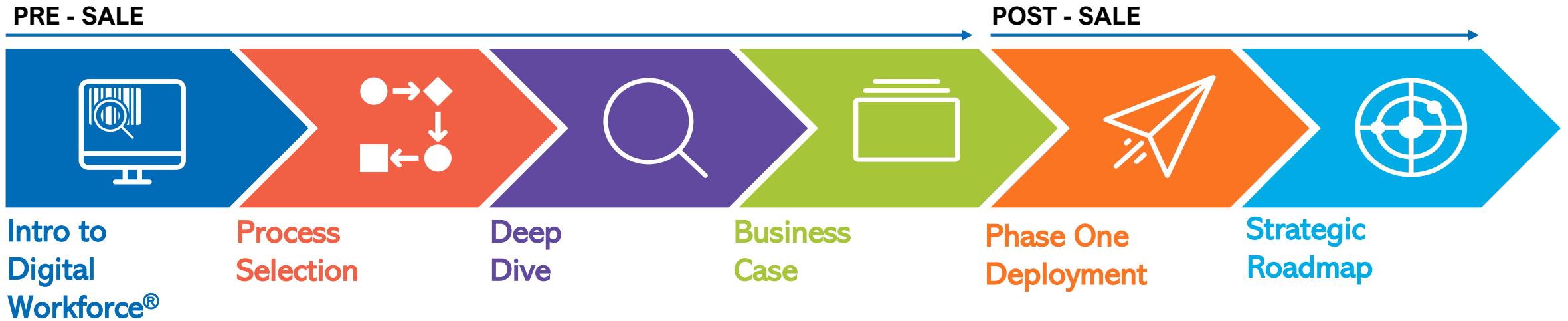
### Why?

- Create a roadmap and plan for ongoing use

### What?

- Strategic roadmap for Intelligent Automation
- COE creation
- Education and enablement

# How to Get Started – Blue Prism Methodology





# blueprism<sup>®</sup>

A Digital Workforce for Every Enterprise