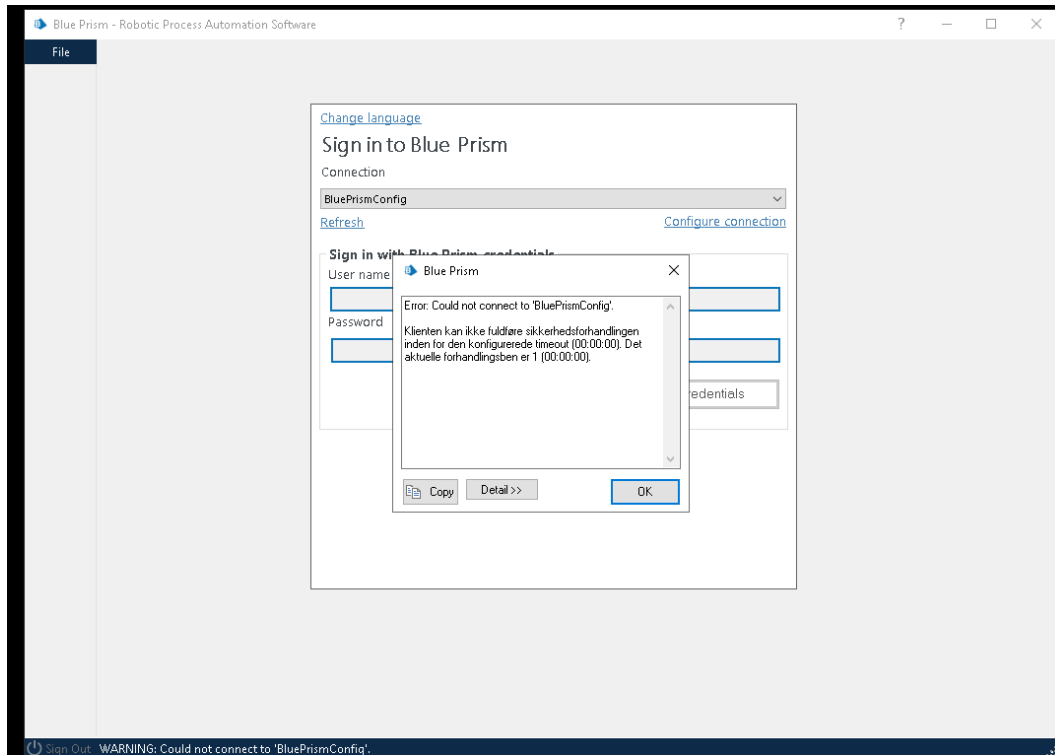


Could not connect to BluePrism

The error message look like this



Details

The client cannot complete the security negotiation within the configured timeout (00:00:00). The current bargaining chip is 1 (00:00:00).

System.TimeoutException: The client cannot complete the security negotiation within the configured timeout (00:00:00). The current bargaining chip is 1 (00:00:00). ---> System.TimeoutException: The request channel was interrupted due to timeout trying to transmit after 00:00:00. Increase the timeout value transferred to the call to Request, or increase the SendTimeout value for the binding. The time allotted for the action may be part of a longer timeout. ---> System.TimeoutException: The HTTP request to http://penrpa1001.pensam.dk:8199/bpserver has exceeded the allotted timeout of 00:00:00. The time allotted for the action may be part of a longer timeout.

at System.ServiceModel.Channels.HttpChannelUtilities.SetRequestTimeout (HttpRequest request, TimeSpan timeout)
at
System.ServiceModel.Channels.HttpChannelFactory`1.HttpRequestChannel.HttpChannelRequest.SendRequest (Message message, TimeSpan timeout)
at System.ServiceModel.Channels.RequestChannel.Request (Message message, TimeSpan timeout)
--- End of stack tracking of internal exceptions ---
at System.ServiceModel.Channels.RequestChannel.Request (Message message, TimeSpan timeout)
at System.ServiceModel.Security.IssuanceTokenProviderBase`1.DoNegotiation (TimeSpan timeout)
--- End of stack tracking of internal exceptions ---

Server stack trace:

at System.ServiceModel.Security.IssuanceTokenProviderBase`1.DoNegotiation (TimeSpan timeout)
at System.ServiceModel.Security.SspiNegotiationTokenProvider.OnOpen (TimeSpan timeout)
at System.ServiceModel.Security.WrapperSecurityCommunicationObject.OnOpen (TimeSpan timeout)
at System.ServiceModel.Channels.CommunicationObject.Open (TimeSpan timeout)
at System.ServiceModel.Security.CommunicationObjectSecurityTokenProvider.Open (TimeSpan timeout)
at System.ServiceModel.Security.SymmetricSecurityProtocol.OnOpen (TimeSpan timeout)
at System.ServiceModel.Security.WrapperSecurityCommunicationObject.OnOpen (TimeSpan timeout)
at System.ServiceModel.Channels.CommunicationObject.Open (TimeSpan timeout)
at System.ServiceModel.Channels.SecurityChannelFactory`1.ClientSecurityChannel`1.OnOpen (TimeSpan timeout)
at System.ServiceModel.Channels.CommunicationObject.Open (TimeSpan timeout)
by System.ServiceModel.Security.SecuritySessionSecurityTokenProvider.DoOperation (SecuritySessionOperation operation, EndpointAddress target, Uri via, SecurityToken currentToken, TimeSpan timeout)
at System.ServiceModel.Security.SecuritySessionSecurityTokenProvider.GetTokenCore (TimeSpan timeout)
at System.IdentityModel.Selectors.SecurityTokenProvider.GetToken (TimeSpan timeout)
at System.ServiceModel.Security.SecuritySessionClientSettings`1.ClientSecuritySessionChannel.OnOpen (TimeSpan timeout)
at System.ServiceModel.Channels.CommunicationObject.Open (TimeSpan timeout)
at
System.ServiceModel.Channels.ReliableChannelBinder`1.ChannelSynchronizer.SyncWaiter.TryGetChannel ()
at System.ServiceModel.Channels.ReliableChannelBinder`1.ChannelSynchronizer.SyncWaiter.TryWait (TChannel & channel)
by System.ServiceModel.Channels.ReliableChannelBinder`1.ChannelSynchronizer.TryGetChannel (Boolean canGetChannel, Boolean canCauseFault, TimeSpan timeout, MaskingMode maskingMode, TChannel & channel)
by System.ServiceModel.Channels.ClientReliableChannelBinder`1.Request (Message message, TimeSpan timeout, MaskingMode maskingMode)
at System.ServiceModel.Channels.RequestReliableRequestor.OnRequest (Message request, TimeSpan timeout, Boolean load)
at System.ServiceModel.Channels.ReliableRequestor.Request (TimeSpan timeout)
at System.ServiceModel.Channels.ClientReliableSession.Open (TimeSpan timeout)
at System.ServiceModel.Channels.ReliableRequestSessionChannel.OnOpen (TimeSpan timeout)
at System.ServiceModel.Channels.CommunicationObject.Open (TimeSpan timeout)
at System.ServiceModel.Channels.ServiceChannel.OnOpen (TimeSpan timeout)
at System.ServiceModel.Channels.CommunicationObject.Open (TimeSpan timeout)
at System.ServiceModel.Channels.CommunicationObject.Open ()

Exception rethrown at [0]:

at BluePrism.AutomateAppCore.ServerFactory.CurrentConnectionValid ()
at AutomateUI.frmApplication.ai (Boolean ffg, Boolean ffh)